

# **Annual Scientific Council Report**

## **Faculty Council**



**May 1, 2025**

# SCIENTIFIC COUNCIL:

## Who Are We?



Dr. Terry Flotte



Dr. Kate  
Fitzgerald



Dr. Dori Schafer



Dr. Javier  
Irazoqui



Dr. Zuoshang Xu



SC Members



Volunteer Core  
Reviewers



CCTS and RAC  
Representatives

- Meet monthly
- **OUTSTANDING** support by Dawn Fontaine

# Scientific Council: What Is Our Role?

## Duties

- Advise the **Executive Council**, **Faculty Council**, and **Student Government Alliance** on “*scientific environment*”
- **Reports** to **Executive Council**, **Faculty Council**
- **Chancellor, Provost, Deans**, and **EVC** for **Research** can **consult** with SC on “*research-related matters*” and “*significant issues*”
- Advise and receive reports from Committees:
  - **Laboratory Safety**
  - **Radiation Safety**
  - **Protection of Human Subjects in Research**
  - **IACUC**

## Advising and reporting

- **Provide faculty input** for considering and evaluating “*activities related to research*”
- **Make recommendations** to the Chancellor, Provost, Deans, and EVC for Research about funding priorities
- **Serve** as *ad hoc* review panel for intramural grants
  - report to Chancellor, Provost, Deans, and EVC for Research
- **Review** the performance of Research Cores (subsidized)
- **Recommend** level of support for Research Cores

Doc. T03-035  
Passed by the BoT 8/6/2003  
Amended 8/23/2006  
Amended 9/18/2013

GOVERNANCE DOCUMENT  
OF THE  
UNIVERSITY OF MASSACHUSETTS WORCESTER

-806.1-

# Research Cores: Philosophy

**Research Cores are a strategic investment by the Institution.**

**The purpose of this investment is to drive scientific innovation and discovery, and in the process increase UMass Chan's impact, reputation, and competitiveness.**

**As a Core matures, it may move from a deficit operation to sustainability, but such progress requires flexibility and financial support.**

**The Institution benefits from knowing the return on investment in terms of grants and contracts that stem from its strategic investment in Cores.**

# Regular Attendees

- Dr. Kate Fitzgerald (RAC)
- Dr. Katherine Luzuriaga (CCTS)
- Dr. Bill Barnett (CRCO)
- Regular Guests:
  - Library
  - EH&S
  - IACUC
  - IBC
  - IRB
  - IT
  - OFA
  - HR

# Core Review – 2024-2025

## Electron Microscopy

- Provides state-of-the-art ultrastructural imaging services, including new tomography and cryo-EM capabilities, supporting over 700 projects and 100+ publications.
- Products are innovative, high-quality, and in high demand, with excellent customer satisfaction.
- Business model balances low internal rates with external revenue streams.

## Transgenic Animal Modeling Core

- The core offers full-service transgenesis, including large animal models and advanced techniques like electroporation.
- Products are innovative, high-quality, and in demand, with strong customer satisfaction.
- Business model prioritizes affordability and accessibility. Serves external companies and universities.



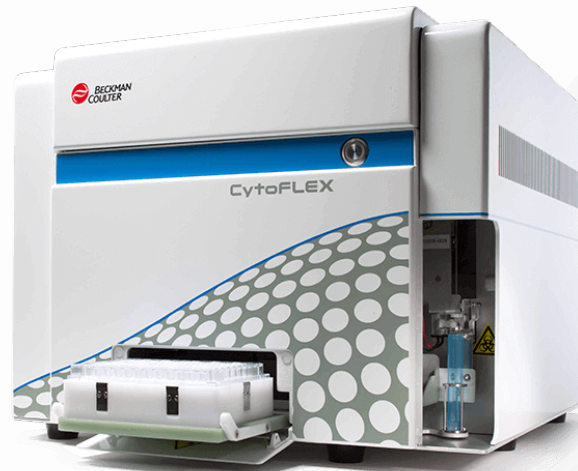
Executive summaries and end-of-year reports to be submitted

# Core Review – Upcoming

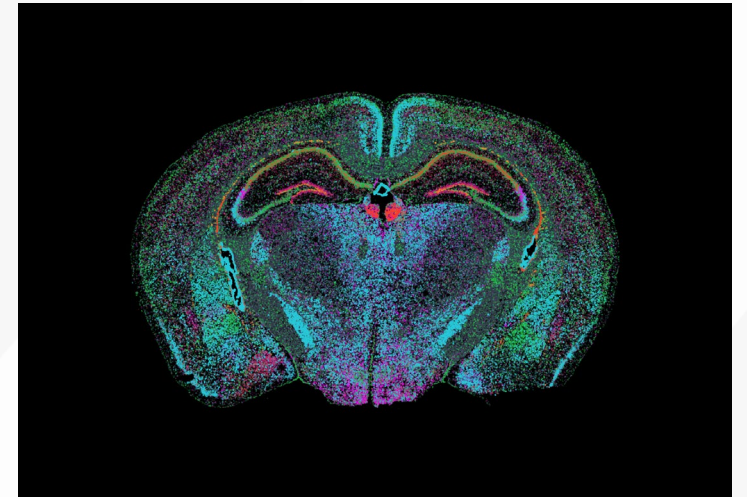
## Animal Behavior



## Flow Cytometry



## SCOPE



# Core Facilities: Strengths (prior to constraints in federal funding)

## Core facility strengths

- Remarkable growth in external user base and in services
- State-of-the art equipment to serve our research enterprise
- Highly skilled and knowledgeable Core Directors
- Bringing in external companies and collaborators – Voucher Program
- Having the resources on campus has turned into new grants and collaborations
- Progress in reducing paperwork for core directors
- Progress in career paths for core directors

## Questions under consideration

- How to balance financial sustainability with capital investments in new technologies to stay competitive?
- How to improve staff recruitment and retention?
- How to target strategic investment?



# We ask of You

## Know your Scientific Council Rep

- They are the conduits of information from the Departments to the Scientific Council, and vice versa

## Partner with us

- Send us your opinions, needs, and questions about the cores and any other aspect of the Research Enterprise

# Thank you for your attention

