

IMPACT REPORT

YEAR 3

Prepared by Kathryn Sabella & Jonathan Lerew

TABLE OF CONTENTS

| | |
|--|-----------|
| A Message from Dr. Boudreaux. | 4 |
| Welcome, Dr. Sharina Person! | 5 |
| Mission Statement & Vision | 6 |
| Featured Unit Accomplishments | 7 |
| Signature Project Update: Jaspr | 11 |
| Exploratory Project Updates. | 12 |
| Pilot Projects Funded | 14 |
| Catalyzing Action: Affiliated Institutions | 15 |
| Catalyzing Action: Scientific Impact..... | 17 |
| Catalyzing Action: Publications Spotlight | 18 |
| Catalyzing Action: New & Ongoing Grants Spotlight..... | 19 |
| Capacity Building: Emerging Scholars | 24 |
| Capacity Building: Internship Program | 25 |
| Staff Spotlight — Thank you! | 26 |

TABLE OF CONTENTS

**Capacity Building: Training,
Education & Curriculum Building 27**

Capacity Building: Workshops 30

Effecting Change: Featured Faculty Awards and Honors . . 32

**Congratulations, Dr. Emmanuel Agu,
Named one of Boston Business Journal’s
Innovators in Healthcare for 2026 33**

**Effecting Change: Policy Influence,
Advocacy, & Technical Assistance 34**

Effecting Change: Community Collaborations 36

Dissemination: Social Media Highlights 37

Dissemination: Follow Us 38

Dissemination: Quarterly Newsletters 39

Appendix I: CAPES Publications 2025 41

A MESSAGE FROM DR. BOUDREAUX



Year 3 of CAPES began in Spring 2025 during a period of uncertainty in the broader federal funding environment. Despite initial delays, CAPES successfully secured full funding. This enabled the Center to maintain momentum and continue advancing its mission to improve suicide prevention through innovative, evidence-based approaches.

Several important leadership transitions occurred during Year 3. Dr. Catarina Kiefe stepped down from her role as Co-Director of CAPES upon her retirement. Dr. Sharina Persons assumed her role as co-director of the Methods Core and has provided strong leadership in advancing the Core's methodological contributions. Additional leadership transitions included Dr. Kate Pivovarova as Director of the Education and Scientific Development Unit and Dr. Kathryn Sabella as Director of the Evaluation Unit. These changes have strengthened CAPES' organizational capacity and positioned the Center for continued growth.

CAPES also continued to expand and diversify its funding portfolio to enhance long-term sustainability and broaden the impact of its work. The Center is currently in advanced discussions with the Four Pines Fund, a philanthropic foundation focused on improving evidence-based suicide care. This partnership, along with collaboration with SafeSide Prevention, is expected to support the development of scalable tools, training programs, and implementation strategies to improve suicide care across healthcare systems.

During Year 3, CAPES faculty published over 125 peer-reviewed articles in high-impact journals, contributing to a growing body of work spanning suicide prevention, mental health, digital health, artificial intelligence, and implementation science. Since its inception, CAPES faculty have produced over 250 peer-reviewed publications.

Finally, CAPES expanded its focus on the role of artificial intelligence in suicide prevention. Efforts in Year 3 emphasized both the development of predictive models and digital tools, as well as the implementation of these innovations within real-world clinical settings. CAPES is uniquely positioned to integrate technological innovation with clinical workflow, ensuring that new approaches enhance patient care, support clinicians, and adhere to rigorous ethical standards. This work will remain a key priority in Year 4.

WELCOME, DR. SHARINA PERSON!



Following the departure of Dr. Caterina Kiefe as Co-Director of the Center and Co-Lead of the Methods Core, Dr. Sharina Person was onboarded as Methods Core Co-Lead. Dr. Person is Vice Chair of the Department of Population and Quantitative Health Sciences at UMass Chan Medical School. This transition ensured continuity of leadership and strengthened the Core's expertise in population health methods and quantitative science. Dr. Person is a professor and Dr. Marcellette G. Williams Senior Scholar at UMass Chan Medical School, where she serves as vice chair of the Department of Population and Quantitative Health Sciences.

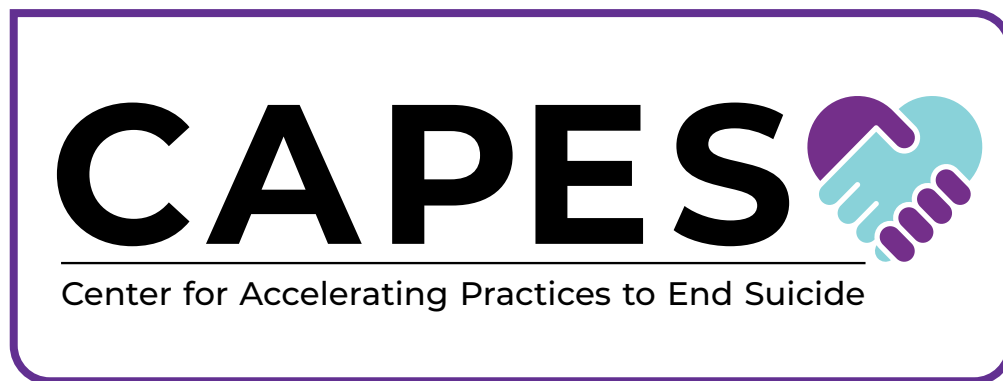
A PhD-trained biostatistician with over 25 years of experience, she is also associate director of the Quantitative Methods Core, offering consultative services in study design, statistical analysis, and project coordination. Her strong commitment to education is reflected in her leadership of 24 statistics courses, mentoring of over 63 doctorate and masters-level students, informal mentoring of junior faculty, and her involvement in several training grants, including a capacity-building project for new investigators in Brazil. Previously, at the University of Alabama at Birmingham, she directed the National Heart, Lung, and Blood Institute-funded CARDIA Coordinating Center and methodology units for two research centers.

Dr. Person's research focuses on randomized controlled trials, coordinating center operations, quality assurance, and statistical modeling in large-scale studies, with expertise in cluster randomization, mixed-model methods, and longitudinal studies. Nationally, she serves on numerous boards, including the Board of Directors for the American Statistical Association, as a grant reviewer for NIH, and as co-developer and director of the Diversity Engagement Survey, a tool for assessing institutional engagement and inclusion, implemented both nationally and internationally.

MISSION STATEMENT & VISION

Vision: “To prevent suicide by accelerating delivery of evidenced-based, compassionate suicide care.”

Mission: “P50: To study how suicide-care technologies can support this primary mission.”



“CAPES is uniquely positioned to integrate technological innovation with clinical workflow, ensuring that new approaches enhance patient care, support clinicians, and adhere to rigorous ethical standards.” — Ed Boudreaux

FEATURED UNIT ACCOMPLISHMENTS

CAPES is comprised of two Cores: The Administrative Core and the Methods Core.

ADMINISTRATIVE CORE

The goals of the Administrative Core are to:

- Support CAPES operations
- Select and fund R03-like Pilot Projects
- Recruit and manage stakeholders
- Train scholars
- Promote synergy across faculty and projects
- Keep abreast of latest best-practices, technologies
- Disseminate resources
- Evaluate CAPES progress and plan future efforts (with Methods Core)

YEAR 3 ADMINISTRATIVE CORE ACCOMPLISHMENTS

OPERATIONS UNIT

- Provided ongoing support for CAPES infrastructure and day-to-day operations via regular meetings to support center coordination, tracking of milestones, and aligning projects.
- Organized and hosted of the annual CAPES Working Retreat (May 2025) and the CAPES Innovation Summit (September 2025).
- Provided logistical support for CAPES events including the quarterly CAPES Showcase Series and the ADAPT-IT Journal Club.
- Led completion of the reCode Digital Health Checklist for all CAPES projects by creating a Digital Collection Form in REDCap and providing direct technical support to project PIs, strengthening regulatory compliance and documentation of digital health practices.
- Collaborated with other P50 centers at Harvard and the University of Pennsylvania to address challenges related to subject enrollment in emergency department settings.
- Continued support of the CAPES undergraduate internship program, onboarding four interns during the reporting period.
- Led the onboarding process for new CAPES faculty, staff and scholars and new affiliate organizations (18 new affiliate faculty and 6 new affiliate organizations).
- Created and updated CAPES policies and procedures (including Publication and Presentation Policies and onboarding/offboarding SOPs)
- Updated the CAPES Technology Compendium and faculty profiles
- Conducted gap analyses comparing proposed aims to work completed to date across CAPES units.

FEATURED UNIT ACCOMPLISHMENTS

DISSEMINATION AND COMMUNITY ENGAGEMENT UNIT

- The CAPES Lived Experience Advisory Board (CLEAB) met monthly and added a new member.
- The CLEAB finalized their first tip sheet: Guidance for Researchers and Developers of Suicide Prevention Technology Tools.
- The CLEAB drafted another tip sheet, set for publication in Year 4: The Use of Artificial Intelligence in Suicide Prevention and Mental Health Support.
- Raised more than \$2,000 for the American Foundation for Suicide Prevention (Out of Darkness Walk, Worcester, MA)
- Increased website traffic from 930 to 3,723 unique visitors
- Disseminated quarterly newsletters to a growing email list of over 500 subscribers
- Posted regular content across a variety of social media platforms

EDUCATION AND SCIENTIFIC DEVELOPMENT UNIT

- Strengthened research capacity by successfully administering an internal R03-sized pilot funding mechanisms, funding two new pilot projects (see features below).

ETHICAL, LEGAL, AND SOCIAL IMPLICATIONS (ELSI) UNIT

- Worked together within our unit and across the other units to increase awareness of how to utilize the ELSI Unit's skills/knowledge
- Coordinated and host a Friends and Foe: Transforming Social Media and AI for a Healthy Future held on September 12, 2024. [View the UMass Lowell News article on Friend or Foe here \(https://www.uml.edu/news/stories/2024/technology-mental-health-symposium.aspx\)](https://www.uml.edu/news/stories/2024/technology-mental-health-symposium.aspx)

EVALUATION UNIT

- Produced Year 2 Impact Report
- Presented to our Internal and External Advisory Boards to obtain input on how to improve Center activities
- Welcomed a new Director, Dr. Kathryn Sabella

BUSINESS DEVELOPMENT UNIT

- Initiated planning for a CAPES-sponsored Mental Health Symposium to be held in 2026, aimed at expanding CAPES visibility, strengthening partnerships, and identifying future funding opportunities aligned with center priorities.

METHODS CORE

The goals of the Methods Core are to:

- Provide implementation science, study design, data analysis and management, economics, machine learning, and person-centered design expertise and technical infrastructure
- Advance methods, including analytic and implementation methods, to study the implementation of suicide care technologies
- Create guidance on best practices in health system implementation of suicide care technologies, including operationalizing how they can facilitate Zero Suicide and identifying trans-setting and setting-specific implementation drivers
- Evaluate all CAPES research activities, plan future efforts.

YEAR 3 METHODS CORE ACCOMPLISHMENTS

DESIGN, DATA, AND ANALYSIS UNIT

- Designed, generated, and presented four JASPR Data and Safety Monitoring Board (DSMB) reports to the CAPES DSMB (July 2025, and January 2026), supporting ongoing safety oversight and transparent monitoring of study progress.
- Programmed and validated the JASPR analytic dataset used for all primary and secondary analyses and conducted extensive quality control of all associated programming to ensure accuracy and reproducibility.
- Developed a comprehensive data dictionary and linked it directly to the JASPR Statistical Analysis Plan, promoting analytic transparency and consistency across analyses.
- Finalized the Real-World Evidence Part B historical control cohort data from Ohio State University and advanced procedures to support routine updates of intervention cohort data, enabling robust longitudinal and comparative analyses
- Completed and automated the upload of JASPR Part A randomized controlled trial data to the NIMH Data Archive (NDA) in compliance with NIMH data sharing requirements.

ECONOMIC EVALUATION UNIT

- Continued systematic cost collection for the JASPR study, including identification of start-up, implementation, and healthcare utilization costs.
- Reviewed and refined JASPR data collection instruments to improve accuracy and completeness of cost data.

FEATURED UNIT ACCOMPLISHMENTS

- Provided consultation to the LEMURS and ADAPT teams, reviewing economic components of their grants, assessing data collection forms, and identifying appropriate data sources for cost analyses.
- Submitted a grant proposal titled “Hospitals and Suicide Care: Cost-Benefit Analysis” to the Pew Charitable Trust Hospital and Suicide Care Project (not funded), which informed future funding strategies.

IMPLEMENTATION SCIENCE UNIT

- Provided ongoing consultation to signature, exploratory, and pilot projects, focusing on implementation science design, validated instruments, harmonization of implementation data across studies, and selection of appropriate implementation strategies.
- Initiated the development of standardized instruments and procedures to systematically capture Expert Recommendations for Implementing Change (ERIC) strategies across projects.
- Conducted qualitative interviews with 20 clinical and administrative staff at Ohio State University and UMass as part of the JASPR project, using the EPIS framework, and collected implementation survey data using validated Weiner measures. Initiated qualitative data coding for these interviews.
- Began planning for a center-wide meeting in Year 4 to examine cross-project use of implementation science tools and strategies, supporting synthesis and generalizability of findings.

MACHINE LEARNING UNIT

- Completed a comprehensive literature review on implementation challenges in machine learning-based suicide risk prediction models, contributing to best practices for responsible and effective deployment.
- Provided ongoing technical consultation to the ADAPT and LEMURS projects, addressing challenges related to machine learning frameworks, model generalizability, and application design.
- Collaborated with the ADAPT project to prepare a manuscript examining the generalizability of a suicide risk prediction model developed at Kaiser Permanente to the UMass system.

PERSON-CENTERED DESIGN UNIT

- Supported human-centered design approaches across CAPES projects.
- Provided consultation to CAPES cores and projects, particularly the JASPR study, focusing on app usability and analysis of System Usability Scale (SUS) data.
- Disseminated CAPES-related work through participation in the UXSYM conference at WPI on October 28, 2025.

SIGNATURE PROJECT UPDATE: JASPR

Jaspr: Testing and Implementing a Tablet-based Intervention to Support Patients with Suicidal Thoughts or Attempts in Emergency Departments

Co-Leads: Ed Boudreaux, Ben Gerber

Part A Collaborators: Sharina Person, Jung Ae Lee, Rachel Davis-Martin, Lourah Kelly, Linda Dimeff, Sharon Johnson, Bruce Barton, Karen Clements, Serena Rajabiun, Kate Pivovarova, Martin Reznek

Part B Ohio Site Lead: Michael Lyons; Part B Ohio Site Collaborators: Rebekah Richards, Katherine Brownlowe, Laura Williams

Part B Colorado Site Lead: Emmy Betz; Part B Colorado Site Collaborators: Michael Allen, Daniel Resnick-Ault

STUDY UPDATES FROM YEAR 3

UMASS CHAN RANDOMIZED CONTROL TRIAL

- 112 enrolled during Year 3 (227 total to-date)
- Data infrastructure was strengthened through initiation of weekly vendor-to-site data transfers and development of an Epic EHR extraction pipeline

OHIO STATE UNIVERSITY (REAL-WORLD IMPLEMENTATION)

- 6,832 patients accrued (3,450 in the implementation phase) with structured EHR and Minimal Viable Product (MVP) data successfully obtained.
- Implementation finding: patient engagement with the intervention was substantially lower than targeted (5.6% vs. a $\geq 20\%$ goal), identifying a key implementation barrier requiring strategy refinement.

UNIVERSITY OF COLORADO

- Completed onboarding and workflow planning
- Implementation delayed but study extension is planned

EXPLORATORY PROJECT UPDATES

CATS-PC

Co-Leads: Rachel Davis-Martin, Bengisu Tulu; Collaborators: Sharon Johnson, Daniel Mullin

Implementing **C**omputerized **A**daptive **T**ests for Mental Health Screening in **P**rimary **C**are (CATS-PC) applies a person-centered design approach to optimize effective primary care clinical workflow integration of multidimensional computerized adaptive tests (CATS) for identifying and tracking mental health symptoms and suicide risk and guiding intervention delivery.



YEAR 3 UPDATES

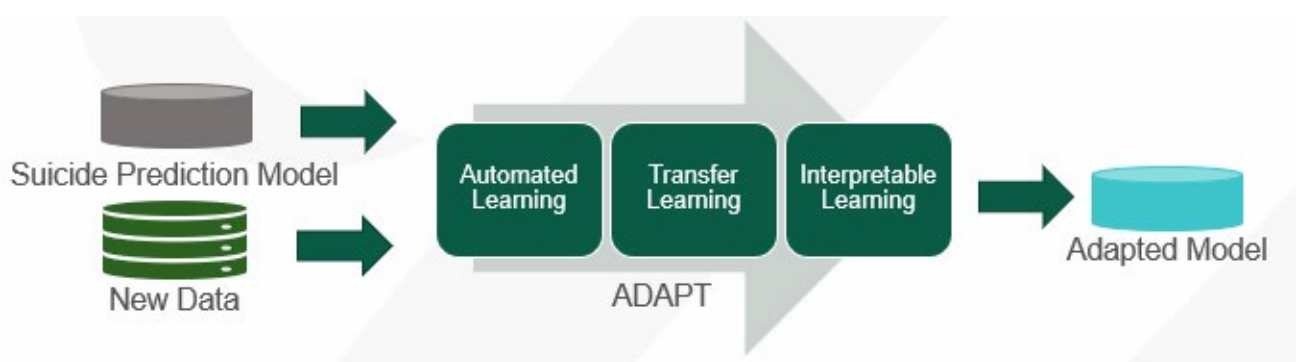
- Completed Aim 2 usability and acceptability testing using standardized patients in iCELS ($n = 7$)
- Identified critical EHR integration components needed to improve adoption
- Deployed CAT-MH into the production ambulatory environment for real-world use.
- Completed a technical pilot in a clinical setting with three providers and conducted follow-up interviews to guide workflow and education refinements.

ADAPT

Co-Leads: Anthony Rothschild, Feifan Liu; Collaborator: Ben Gerber

The **A**utomated, **D**ata-Driven, **A**daptable, and **T**ransferable Learning for Suicide Risk Prediction Project (ADAPT) aims to systematically assessing and improving a suicide risk algorithm's generalizability and adaptability from an original development setting to a new healthcare system.

EXPLORATORY PROJECT UPDATES



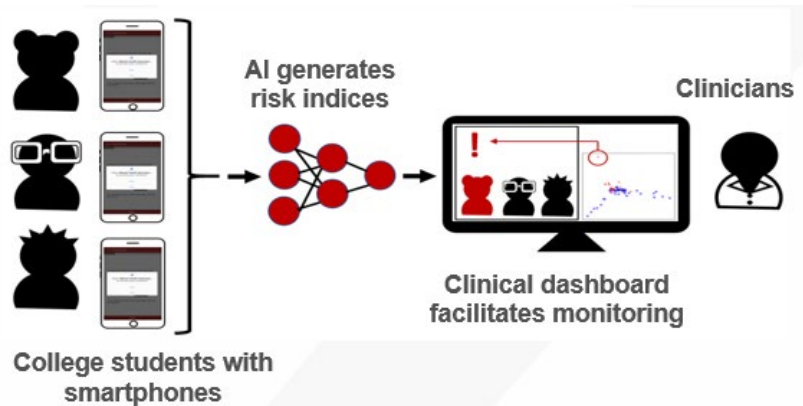
YEAR 3 UPDATES

- Advanced innovative deep learning and large language model (LLM) approaches for suicide-attempt risk prediction using tabular EHR data, evaluating multiple LLM families and adaptation strategies.
- Submitted a manuscript comparing machine learning versus deep learning approaches, strengthening evidence on generalizability of established prediction models across health systems and clinical contexts.

LEMURS

Co-Leads: Katie Dixon-Gordon, Elke Rundensteiner

Leveraging **E**arly **M**ental Health **U**ncovering **R**isk for **S**uicide (LEMURS) expands a smartphone app that uses passive smartphone data to derive a suicide risk index, and couples it with an iteratively co-designed clinician facing dashboard and processes to streamline suicide risk screening in college campuses.



YEAR 3 UPDATES

- Revised interview protocols, updated the IRB application, and initiated Aim 1 stakeholder interviews ($n = 4$) to refine understanding of passive monitoring and alert needs.
- Launched Aim 3 data collection ($n = 17$) to evaluate predictive utility of EMU inputs.

PILOT PROJECTS FUNDED

CATS-PC: ENHANCING EHR-INTEGRATED CAT-MH DISPLAYS TO IMPROVE SUICIDE RISK DETECTION IN PRIMARY CARE

Lead: Rachel Davis-Martin (UMass Chan); **Con:** Sharon Johnson (WPI), Bengisu Tulu (WPI)

PROJECT OVERVIEW

The study team will conduct co-design sessions with primary care medical and behavioral health clinicians to enhance existing EHR-integrated CAT-MH results displays, incorporating item-level questions and patient responses. Based on this feedback, we will replace current displays with improved versions that offer more detailed views of patient symptoms within the production EHR. Finally, we will compare CATS-PC implementation outcomes before and after the enhanced displays, assessing acceptability, usability, feasibility, reach, fidelity, and adoption to inform a deployment package that supports broader implementation and scalability.

ADVANCING SUICIDE RISK DETECTION IN PERINATAL CARE: EVALUATION OF THE CAT-SS AND EPDS ACROSS CLINICAL AND RESEARCH SETTINGS

Lead: Martha Zimmermann (UMass Chan); **Collaborators:** Anna Whelan (UMass Chan), Lourah Kelly (UMass Chan), Nancy Byatt (UMass Chan), Edwin Boudreaux (UMass Chan)

PROJECT OVERVIEW

The study team will aim to identify gaps in suicide risk detection on the EPDS by analyzing existing RCT data to compare suicide risk reporting in obstetric versus research settings and examine predictors of missed risk. We will then evaluate item-level performance of the CAT-SS among perinatal participants from our CAPES Pilot Project, assessing score distributions, reliability, correlations with related measures, and item exposure. Finally, we will explore the CAT-SS's preliminary reliability and predictive validity through longitudinal follow-up at 4, 6, and 8 months, examining changes in scores and their associations with mental health symptoms.

CATALYZING ACTION: AFFILIATED INSTITUTIONS

PRIMARY FACULTY



UMass Chan
MEDICAL SCHOOL

UMass Chan
Medical School



UMass Lowell



UMass Memorial Health

UMass Memorial
Health



WPI

Worcester
Polytechnic
Institute

AFFILIATE FACULTY



BROWN

Brown University



Butler Hospitality



**THE OHIO STATE
UNIVERSITY**

COLLEGE OF MEDICINE

The Ohio State
University College
of Medicine



University of
Massachusetts
Amherst

UMass Amherst

UC San Diego

University of
California
San Diego



University of Colorado
Boulder

University of
Colorado Boulder

UCONN
UNIVERSITY OF CONNECTICUT

University of
Connecticut



University
of Rochester

University of
Rochester

PARTNERS

NEW PARTNERS IN YEAR 3



New England
Addiction Technology
Transfer Center



Safeside Prevention



RAE Health

CONTINUING PARTNERS



Adaptive Testing
Technologies



Cerner



Cogitas Consulting



Epic



Evidence-based
Practice Institute



Jaspr Health



Oracle



PointClickCare



Precision
Healthsoft



Programination



Q2i



Zero Suicide
Institute at EDC

CATALYZING ACTION: SCIENTIFIC IMPACT

The faculty and staff at CAPES contribute expertise from diverse disciplines and research fields, ensuring that our work maintains a high scientific impact while advancing research and the translation of evidence-based practices in suicide prevention. CAPES evaluates its scientific impact across three interconnected areas:

1. Improved identification of suicide risk
2. Decreased suicidal behavior in healthcare and community settings
3. Implementation of suicide care technologies in healthcare settings

In our third year, our core CAPES team was successful in producing high-impact work on suicide care and related topics!

- We presented at over 25 international, national, and regional conferences.
- We published 127 peer-reviewed articles in high impact journals such as JAMA and Journal of American Medical Informatics Association.
- We were awarded several new grants, most from NIH or large foundations.



CATALYZING ACTION: PUBLICATIONS SPOTLIGHT

PEER-REVIEWED PUBLICATIONS IN YEAR 3 THAT WERE A DIRECT RESULT FROM OUR CAPES WORK

Palmer BW, Arias SA, Dunlap DR, Gould GE, Rahmoun MB, Boudreaux ED, Nebeker C. The ethics of proximity: Enrolling patients in emergency department hallway beds for suicide research. *Academic emergency medicine: official journal of the Society for Academic Emergency Medicine*. 2025 January 23;32(4):454-462. PubMed PMID: 39853596; PubMed Central PMCID: PMC12685292; DOI: 10.1111/acem.15107.

Zimmermann M, Mahanna A, Shashkova E, Drouhard R, Carr C, Sheldrick RC, Boudreaux ED, Schmidt NB, Byatt N. Anxiety Sensitivity in the Perinatal Period: A Scoping Review. *Mental health & prevention*. 2025 March;37. PubMed PMID: 40125489; PubMed Central PMCID: PMC11928161; DOI: 10.1016/j.mhp.2025.200397.

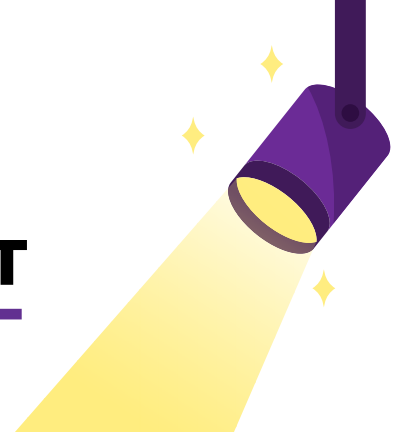
Arias SA, Gaudiano BA, Epstein-Lubow G, Zylberfuden S, Weinstock LM. Considerations and Challenges When Using Clinical and Vital Record Review for Suicide Research. *Journal of patient safety*. 2025 April 1;21(3):e8-e17. PubMed PMID: 39927831; PubMed Central PMCID: PMC11932785; DOI: 10.1097/PTS.0000000000001325.

Morena AL, Gaias LM, Larkin C, Wang Y, Kiefe C, Boudreaux ED. Clinician profiles of suicide prevention attitudes and confidence and their association with reported suicide prevention practices. *Psychological services*. 2025 July 28. PubMed PMID: 40720306; PubMed Central PMCID: PMC12313209; DOI: 10.1037/ser0000981.

Knorr AC, Wallace GT, Schatten HT, Prince MA, Boudreaux ED, Miller IW, Camargo CA Jr, Conner BT, Arias SA. Characteristics differentiating near-term multiple, distal multiple, and single suicide attempters during the 12-months post-discharge from the emergency department. *Journal of psychiatric research*. 2025 October 4;191:711-719.

For a list of all peer-reviewed publications by CAPES faculty in Year 3, see [page 41](#).

CATALYZING ACTION: NEW & ONGOING GRANTS SPOTLIGHT



NEW GRANTS

Our faculty were awarded several new grants this year from different funders, including from the National Institutes of Health and Private Foundations. Most focus on topics related to suicide prevention or similar topics (e.g., behavioral health) and/or utilize technologies similar to those used in CAPES projects.

PROJECT CATALYST

Four Pines Fund, WAWD00000001883 (PI Boudreaux)

Developing and implementing the Suicide Care Catalyst, a new software, technical assistance, clinician training, and consultation program for hospitals and emergency departments seeking to incorporate effective suicide care into their services.

Total award amount (3/1/2026–2/28/2029): \$5,271,243.19

REACHING CALM: A DIGITAL INTERVENTION TO PREVENT PERINATAL ANXIETY DISORDERS

K23MH137382 Martha Zimmermann, PhD (PI)

National Institute of Mental Health (NIMH)

Mentored Patient-Oriented Research Career Award (K23)

Reaching Calm includes a 1) digital Anxiety Sensitivity Intervention including SMS text messages and web-based user interface, 2) training for obstetric providers, and 3) implementation protocol for integrating anxiety prevention into the obstetric practice setting. In this study, we will conduct a pilot cluster RCT to assess the feasibility, acceptability, and preliminary effectiveness of Reaching Calm and examine user-centered design engagement strategies.

Total award amount (9/15/2025–08/31/2029): \$646,910

AN INVESTIGATION OF SEX DIFFERENCES IN EXCESSIVE ALCOHOL USE IN YOUNG ADULTHOOD AND MIDDLE AGE: CHARACTERIZING THE INFLUENCE OF MULTIPLE SOCIAL ROLES, STRESS, AND POOR MENTAL HEALTH

R03AA032321-01 Kathryn Sabella, PhD (PI)

National Institute on Alcohol Abuse and Addiction (NIAAA)

A secondary analysis of the National Longitudinal Study of Adolescent to Adult Health dataset will examine gender differences in the pathways to excessive alcohol use in young adulthood and middle age, with a focus on the effects of social roles, stress, and negative affect.

Total award amount (9/15/2025–8/31/2027): \$100,000

AI-CARDIO: ARTIFICIAL INTELLIGENCE FOR CARDIOVASCULAR RISK DETECTION IN GLP-1 THERAPY 1

NIH, 1OT2OD032581 Adrian Zai, PhD (PI)

This proposal seeks to determine which patients derive the greatest cardiovascular benefit from GLP-1s and to build models predicting those results.

Total award amount (10/1/2025–7/31/2026): \$99,988

LIFESTYLE CHANGE IMPLEMENTATION RESEARCH NETWORK AT PRC AT UMASS CHAN

NIH, CDC U48DP006955-01-00 Jamie Faro/Stephenie Lemon (PIs)

The goal of this study is to determine whether a 4-month digital lifestyle coaching program improves activity and diet among adults starting GLP-1/GIP therapy, and to assess real-world implementation and sustainability of this approach across patients and health systems.

Total award amount (10/1/2025–10/1/2030): \$499,999

A RANDOMIZED CONTROLLED TRIAL OF PUBLIC HEALTH MESSAGES TO PREVENT FIREARM SUICIDE AMONG A NATIONALLY REPRESENTATIVE SAMPLE OF FIREARM-OWNING US VETERANS

Centers for Disease Control and Prevention — Emmy Betz, Co-I (PI: Stanley)

Total award amount (2/1/26–7/31/28): \$527,780

ONGOING GRANTS

CAPES faculty also continue as principal investigators and co-investigators on innovative ongoing research grants.

PLANNING THE NEXT GENERATION OF HIGH IMPACT SUICIDE PREVENTION PRIORITIES

Four Pines Fund, Ed Boudreaux (PI)

This planning grant will identify opportunities for translating evidence regarding suicide prevention into clinical practice.

Total award amount: \$250,000

AI2EQUITY: AI INTEGRATING SOCIAL DETERMINANTS OF HEALTH TO ADVANCE HEALTH EQUITY IN CARDIOVASCULAR RISK PREDICTION

NIH, 1R01HL171599, Feifan Liu, PI; Ben Gerber, Co-I

There is a pressing need to address health disparities in cardiovascular disease (CVD). This study will use machine learning to develop a novel CVD risk prediction model that considers social determinants of health, structural social factors, and clinical factors, as well as their complex interactions. The model will be designed to be equitable, interpretable, and generalizable across diverse populations.

Total award amount: \$3,965,300

PATHWAYS TO PERINATAL MENTAL HEALTH EQUITY (PATHWAYS)

Partner-2023C1-31233 N. Byatt, DO, MS, MBA, (Co-PIs)

Patient Centered Outcomes Research Institute (PCORI)

The goal is to conduct a Hybrid Type I Comparative Effectiveness Study to compare a healthcare system-only approach to addressing perinatal mood and anxiety disorders in obstetric settings, the PRogram In Support of Moms (PRISM), to a Healthcare-Community Partnership approval.

Total award amount: \$21,000,000

MINDFULNESS-BASED NEUROFEEDBACK TO AUGMENT DBT PSYCHOTHERAPY FOR ADULTS WITH BORDERLINE PERSONALITY DISORDER (MIND-BPD)

1R61MH135009-01A1; Katherine Dixon-Gordon (Co-I); (S. Fineberg: PI)

Principal Investigator: Sarah Fineberg, M.D., Ph.D.

National Institute of Mental Health

Type and Number:

Total award amount (07/01/2024-06/30/2029):

CONVENING STAKEHOLDERS TO ADVANCE MATERNAL SUICIDE PREVENTION RESEARCH

Engagement Award Conference EASCS-38478, Michael Allen, co-PI.

Patient Centered Outcomes Research Institute.

Priorities. Total award amount (11/21/2024-2/28/2026): \$124,988.

THE NATIONAL CENTER FOR HEALTH AND JUSTICE INTEGRATION FOR SUICIDE PREVENTION

P50 MH-127512-01A1; Sarah Arias (Co-I): Johnson/Ahmedani/Weinstock Co-PIs

The National Center for Health and Justice Integration for Suicide Prevention (NCHATS): (1) uses contact with the justice system (e.g., police contact, court involvement, arrest) as an indicator of suicide risk in the general population; (2) demonstrates how big data systems that efficiently track publicly available data on justice involvement can be linked to health system records to identify individuals at risk for suicide and connect them to community care; and (3) examines effectiveness and scalability of suicide prevention approaches using these methods.

Total award amount (08/22/2022-07/31/2027):

NEURAL MECHANISMS AND PREDICTORS OF AN ULTRA-BRIEF SUICIDE PREVENTION STRATEGY

Katherine Brownlowe

R01MH126116; Katherine Brownlowe, Co-I (Gorka: PI)

The objective of this study is to identify how the crisis response plan (CRP) affects neural functioning and how these changes are correlated with reductions in suicide attempts and suicidal ideation.

Total award amount (04/01/2021-03/31/2026):

CAPACITY BUILDING: EMERGING SCHOLARS

In Year 3, our first two cohorts of Emerging Scholars continued to build their own capacity as independent researchers under the guidance of CAPES faculty mentors and through training opportunities afforded by the CAPES grant.

A selection of Scholars' achievements in the past two years:

- Martha Zimmerman, Emerging Scholar (Cohort 1), was awarded a K23 Mentored Patient-Oriented Research Career Award from the National Institute of Mental Health.
- Kathryn Sabella, Emerging Scholar (Cohort 2), was awarded her first NIH grant, an R03 Small Research Grant from the National Institute on Alcohol Abuse and Alcoholism.
- Nicholas Josselyn, Emerging Scholar (Cohort 2), presented "Ensembles of Statistically Independent Models: A Method for Semi-Supervised Domain Adaptation at the IEEE International Conference on Machine Learning and Applications (ICMLA), Special Session: Deep Learning and Applications, 2025.
- Lourah Kelly, Emerging Scholar (Cohort 1), peer-reviewed publication: Kelly, L. M., Buuh, S., Schick, M.S., Peikes, C., & Zajac, K. (2024). Does personalized mean popular? A content analysis of suicide prevention smartphone applications. *Current Psychology*. <https://doi.org/10.1007/s12144-024-06169-0>
- Dominic Denning, Emerging Scholar (Cohort 1), recipient of the Keith Rayner Memorial Graduate Student Research Award, *Predicting Risk in Sexual Minorities (PRISM)* (UMass Amherst).

CAPES also supported trainings and conference travel costs for Emerging Scholars in Year 3:

- Dr. Xihan Yang attended and presented at the American Psychological Association in August 2025 in Denver, CO
- Dr. Kathryn Sabella has completed the Introduction to R for Researchers workshop and Intro SEM Information — SMaRT Workshops, in June 2025
- Dr. Richard Lopez attended the Digital Media and Developing Minds Conference in Washington, D.C.

CAPACITY BUILDING: INTERNSHIP PROGRAM

The CAPES Center has an undergraduate internship program that recruits undergraduate students (medical and non-medical students) for 6–8 weeks paid or unpaid internship.

The program aims to expose undergrad students to research environment and educate them about CAPES mission. In the past year we successfully engaged four undergraduate and graduate interns.

ARBA KAMBERI

Arba is a senior at Harvard College studying Neurobiology. Under the mentorship of Dr. Ben Gerber, MD, MPH. Arba will contribute to projects that utilize open-source health data to explore trends related to stress resilience and susceptibility, depression symptomatology, and depression diagnoses. Through these efforts, Arba supports CAPES' mission to accelerated evidence-based suicide prevention practices by advancing insight into the pathways involved in mental health outcomes.

T'LEAH MCQUADE

T'Leah is an Information Technology student at UMass Lowell. Under the mentorship of Dr. Lourah Kelly, PhD, T'Leah works on data visualization for CAPES papers, helping with automating captioning process for different CAPES events, and contributing technical advice on EA Avatar project.

“The value of the knowledge and experience I've obtained interning at CAPES far exceeds any coursework I have done toward my degree.” — T'Leah McQuade

SAMANTHA WILLEY

Samantha was an undergrad student at University of Delaware. She worked with Operations Units during summer of 2025 to conduct literature review and update the CAPES Zero Suicide/Tech intervention compendium and she also updated the Central MA community Resource guide that is part of UMass Memorial discharge paperwork for patients at risk for suicide. Samantha attended all Jaspr RCT meetings which allowed her to get first-hand experience with clinical trials.

“My time with CAPES provided an incredible introduction to the world of research and a deeper understanding of the intersection between data and mental health. I intend to use the knowledge and advocacy I’ve gained to better myself as a future student and clinician, prioritizing mental wellness for both my patients and myself in a high-stakes healthcare environment.”

— Samantha Willey

MATTHEW SEGIL

Matt is a medical student at UMass Chan School of Medicine, and he is an MBA student at UMass Lowell. He worked with CAPES director Dr. Ed Boudreaux on preparing suicide prevention related grant—The Catalyst—Matt provided valued feedback regarding the training component of the project and helped with defining the business model for the proposed care pathway catalyst. He got the opportunity to interact with multiple CAPES faculty and he was able to translate his medical knowledge into an actionable proposal that might one day become standard of care.

“Suicide prevention work is both urgent and essential. During my time with the CAPES team, I came to appreciate how deeply committed the group is to preventing deaths and improving the quality of life for individuals experiencing suicidal ideation.” — Matthew Segil

“As someone interested in both healthcare and business, this experience showed me that it is possible to integrate the two while remaining committed to my core values.” — Matthew Segil

STAFF SPOTLIGHT — THANK YOU!



We extend our sincere thanks to Gwyneth Gould for her invaluable contributions to CAPES since its inception. As a Research Coordinator, she played a key role in strengthening operations and advancing multiple projects, particularly Jaspr, where her coordination and attention to detail were critical to successful implementation.

Widely known and respected across CAPES, she was a trusted partner to faculty and staff and brought a strong commitment to our mission of suicide prevention. We are grateful for her lasting impact and wish her continued success in her new role within the UMass Memorial clinical system. Thank you, Gwen!

CAPACITY BUILDING: TRAINING, EDUCATION & CURRICULUM BUILDING

Our faculty also serve as educators in academic and community settings.



ED BOUDREAUX

Healthcare System-based Case Formulation of Suicide Events after Acute Care Webinar. The Collaborative Assessment and Management of Suicidality (CAMS) Care. August 19, 2025.

The Role of Technology in Military Suicide Prevention Virtual Roundtable. U.S. Department of Defense Suicide Prevention Office. August 4, 2025.

Creating a System of Safety: Advancing Suicide Prevention in Health Systems. Grand Rounds, Department of Obstetrics, Gynecology & Reproductive Sciences, division of Epidemiology & Biostatistics. Rutgers Robert Wood Johnson Medical School. June 6, 2025.

Creating a System of Safety: Advancing Suicide Prevention in Primary Care Settings. Nationwide Children's Organization's Accelerating Suicide Prevention in Real World-Settings (ASPIRES) Center Webinar Series: What is Research Telling Us? June 11, 2025

Creating a System of Safety: Advancing Suicide Prevention in Health Systems. Rutgers Robert Wood Johnson Medical School, Department of Obstetrics, Gynecology & Reproductive Sciences. Grand Rounds (Virtual). June 6, 2025.

Healthcare System-based Case Formulation: Suicide Prevention in the Emergency Department. Henry Ford Hospital Behavioral Health Department Grand Rounds. March 27, 2025



EMMANUEL AGU

Guest speaker, Strategies for seeking healthcare research funding, Synergy in Partnerships, Advanced Research and Knowledge (SPARK) workshop, SUNY POLY, June 23, 2025



MICHAEL HALL ALLEN

From Risk Detection to Intervention: Feasible Suicide Care at Scale. Grand Rounds, Department of Psychiatry, UMass Chan Medical School. Worcester, MA. September 18, 2025.



EMMY BETZ

“Firearm Suicide Prevention”; invited speaker; Rotary Club of Boulder; 8/2025



RACHEL DAVIS-MARTIN

Evidence-Based Intervention for Suicidal Crises: Overview of the Safety Planning Intervention. 24th Annual Massachusetts Suicide Prevention Conference, Norwood, MA. April 2025

Assessment and Management of Suicide Risk in Outpatient Settings (AMSR), Worcester, MA. National Trainer for AMSR through EDC. Train clinicians, clinical supervisors, and administrators on AMSR protocol. 2023–

Stanley-Brown Collaborative Safety Planning Intervention (SPI), Fundamentals, Intermediate, and Advanced Levels. Worcester, MA. Consultant for Massachusetts Department of Public Health conducting virtual and in person trainings for clinicians, clinical supervisors, administrators, and school systems on SPI.

Responding to Suicide Crises in the Community: Suicide Prevention Practices Among Firefighters and EMS First Responders, Town of Boylston. 2025

Collaborative Safety Planning for 988 Crisis Call Centers, Virtual Trainings, Department of Public Health, 15 Fundamentals sessions, 7 Intermediate sessions, 21 Advanced sessions, 14 Train the Trainer sessions. 2025

Building Confidence in Collaborate Safety Planning: Approaches to Gathering and Incorporating Client Information. Statewide in Massachusetts. Consultant for the Massachusetts Department of Mental Health conducting virtual trainings for clinicians, clinical supervisors, administrators, and school systems on collaborative approaches to safety and wellness training. 2024–2025



LINDA M. ISBELL

What Emergency Physicians and Nurses Feel and Why it Matters. Department of Emergency Medicine [Grand Rounds], UMass Chan Medical School, Worcester, Massachusetts. September 2025.



JUNG AE LEE

Pragmatic Trials: From theory to practice in Health, PQHS Research Methods Meeting, UMass Chan. April 025

Advanced distance metrics for high-dimensional clustering: introducing 'distanceHD' R-package, Lighting talk (10 min, virtual), R/Medicine conference. June 2025



FEIFAN LIU

Integrating Ethical Principles into Machine Learning and Generative AI for Health Informatics. Invited speaker at the Department of Health Information Management Grand Rounds. June 2025



LOURAH KELLY

Assessment and Management of Suicide Risk in Outpatient Settings (AMSR), Worcester, MA. National Trainer for AMSR through EDC. Train clinicians, clinical supervisors, and administrators on AMSR protocol. 2023–



DANIEL MULLIN

Successful Behavioral Health Referrals. A Grand Rounds Delivered to the Department of Family Medicine and Community Health at UMass Chan Medical School. Mar 4, 2025

CAPACITY BUILDING: WORKSHOPS



CAPES SUMMIT 2025

CAPES hosted a Summit on Sept. 22, 2025, attended by 72 people.

Three sessions:

- Developing Effective Clinical Decision Support for Addressing Suicide Risk in Healthcare, Julie Angerhofer, PhD, MPH
- Implementing Tangible, Actionable Safety Plans across Clinical Settings, Kurt Michael, PhD
- Using Technology to Bridge the Gaps and Chasms in the Mental Healthcare System: A Lived Experience Perspective, T'Leah McQuade, A.A.

We had outstanding evaluation ratings, with all three presentations rated as very good or excellent.

CAPES ANNUAL RETREAT 2025

On May 20 and 21, 2025, CAPES hosted its Annual Retreat with the theme of *Harnessing AI for Suicide Prevention: Innovations and Future Directions*. This year we placed an emphasis on the use of AI in suicide prevention and suicide prevention research, showcasing recent advancements in the technology.

A full summary of the 2025 Retreat, including presentation slides, is available on our [CAPES 2025 Annual Retreat webpage](https://www.umassmed.edu/capes/events/2025/05/capes-annual-retreat-2025/) (<https://www.umassmed.edu/capes/events/2025/05/capes-annual-retreat-2025/>).



"I love the work CAPES is doing with AI. It's a hot topic right now but this is the kind of thing AI is 100% for. Assisting scientists in more tedious tasks, making the work easier, and finding ethical ways to use it to expand what is possible in mental health research." — Advisory board member who attended the Retreat



SUICIDE PREVENTION MONTH AT PSYCHIATRY GRAND ROUNDS — “FROM DETECTION TO INTERVENTION: FEASIBLE SUICIDE CARE AT SCALE”

Michael Allen, MD, Professor, Psychiatry; Medical Director, Rocky Mountain Crisis Partners, University of Colorado, Anschutz Medical Campus spoke at UMass Chan’s Department of Psychiatry and Behavioral Sciences Grand Rounds on Thursday, Sept. 18, 2025, 12–1 p.m. The title of his presentation was “From Risk Detection to


Intervention: Feasible Suicide Care at Scale.”



USING THE ASSESSMENT, DECISION, ADMINISTRATION, PRODUCTION, TOPICAL EXPERTS-INTEGRATION, TRAINING, AND TESTING (ADAPT-ITT) FRAMEWORK IN SUICIDE PREVENTION — JOURNAL CLUB


On May 12, 2025, Dr. Lily Brown presented an overview of the Assessment, Decision, Administration, Production, Topical Experts–Integration, Training, and Testing (ADAPT-ITT) methodology developed by [Wingood and DiClemente \(2008\)](#) as part of the Journal Club. She followed the presentation by discussing how ADAPT-ITT can be used successfully in suicide prevention using one of her recent trials focused on reducing suicide among young adults with minoritized sexual identities.

Using the ADAPT-ITT Framework in Suicide Prevention
CAPES Education and Science Development Unit
Journal Club

Dr. Lily Brown will present an overview of the Assessment, Decision, Administration, Production, Topical Experts–Integration, Training, and Testing (ADAPT-ITT) methodology developed by [Wingood & DiClemente \(2008\)](#), followed by how ADAPT-ITT can be used successfully in suicide prevention using one of her recent trials focused on reducing suicide among young adults with minoritized sexual identities. There will be time for discussion and questions in this Journal Club format. Attendees are strongly encouraged to read Dr. Brown’s recent protocol paper using the ADAPT-ITT framework [here](#).

Monday
May 12th, 2025
2:00 PM - 3:30 PM EST
Virtual
Register Here:




USER EXPERIENCE SYMPOSIUM 2025

On October 28, 2025, the 7th Annual UX Symposium (UXSYM) was held at WPI in Worcester, MA, and supported by Person Design Unit (PDU). This year’s symposium explored how AI is transforming the way we understand users, generate insights, and design for human flourishing. Leading researchers, industry experts, and design innovators came together for a day of talks, panels, and workshops all focused on shaping the future of AI-enabled, human-centered product design.

EFFECTING CHANGE: FEATURED FACULTY AWARDS AND HONORS

Here are just a few of the awards and honors received by our faculty this year:

MICHAEL HALL ALLEN

University of Colorado Health, Medical Staff Pioneer Innovation Award, 2025

LINDA ISBELL

Isenberg School of Management, Department of Accounting Outstanding Service Award, 2025

DANIEL MULLIN

Alumni of the Year, Spalding University, School of Professional Psychology, 2025

MARTIN A. REZNEK

Society for Academic Emergency Medicine, Board of Directors' Recognition of Outstanding Leadership, 2025

Society of Critical Care Medicine (CCCM) Congress Scholarship Award, Emergency Medicine Section, 2025 (Awarded for original research related to novel ED extubation clinical practice guideline)

MARTHA ZIMMERMANN

Mental Health and Prevention Early Career Research Award 2025

CONGRATULATIONS, DR. EMMANUEL AGU, NAMED ONE OF BOSTON BUSINESS JOURNAL'S INNOVATORS IN HEALTHCARE FOR 2026



We are proud to celebrate CAPES faculty member Emmanuel Agu, PhD, on being recognized as a 2026 Boston Business Journal Innovator in Healthcare in the Research category.

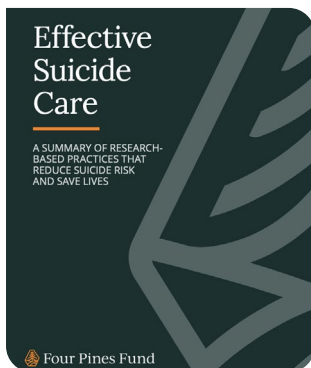
Dr. Agu, a professor at Worcester Polytechnic Institute and leader of the CAPES Machine Learning Core, conducts pioneering research at the intersection of artificial intelligence, mobile health, and digital biomarkers.

His work explores how smartphone sensing and machine learning can help detect and monitor conditions such as depression and suicide risk, helping expand the possibilities for earlier intervention and more accessible care.

Congratulations to Dr. Agu on this well-deserved recognition.

EFFECTING CHANGE: POLICY INFLUENCE, ADVOCACY, & TECHNICAL ASSISTANCE

Our faculty use their expertise to promote and advocate policy changes and serve as consultants to local, state, and federal organizations and advisory committees.



CAPES faculty Edwin Boudreaux, PhD, Lourah Kelly, PhD, Rachel Davis-Martin, PhD, Daniel Mullin MPH, PsyD, and Operations Unit Lead, Basheer Rahmoun, MD provided expert feedback and review of the [Effective Suicide Care: A Summary of Research-Based Practices That Reduce Suicide Risk and Save Lives](#). This is a brief commissioned by the Four Pines Fund that distills key insights from decades of research and lived experience into an accessible overview of what works in suicide care—and why these proven practices remain poorly known and underutilized.

Many CAPES investigators effect change directly through several activities.

ED BOUDREAUX

Centers for Medicare & Medicaid Service (CMS) FY25 Payment Policies under the Physician Fee Scheduled and Other Changes to Part B Payment and Coverage Policies, Suicide Prevention Interventions Reimbursements. 2023–present. Role: Expert Advisory Panel Member

EPIC Suicide Prevention Brain Trust Meeting. Identified care gaps in EPIC’s suicide prevention tools and workflow following the Action Alliance’s Recommended Standard Care Guide. November 25, 2025. Role: Expert Advisory Panel Member.

American Institutes for Research® Behavioral Health EWG Expert Workgroup, October 27, 2025. Annual Measure Review. Preventive care and screening: Screening for depression and follow-up plan. Adherence to antipsychotic medications for individuals with Schizophrenia. Reviewed measure specifications on alignment with current guidelines, feasibility, and unintended consequences. Role: Behavioral Health Expert”

Advise the Centers for Medicare & Medicaid Services (CMS) on measure strategies. eCQM Behavioral Health/Psychiatry Expert Workgroup. American Institutes for Research®. June 2, 2025. Role: Expert Panelist

Vermont Program for Quality in Health Care (VPQHC), Vermont Suicide Prevention in Emergency Departments QI Initiative. Provide technical assistance and consultation related to providing high quality suicide-related care in EDs. 2020–present. Role: Expert Advisory Panel Member.

University of Vermont Health Network (UVMHN) Suicide Treatment Program Advisory Board. Provide technical assistance and consultation related to building a suicide-focused care center. 2023–present. Role: Expert Advisory Panel Member.

Massachusetts Department of Public Health, 988 and Safety Planning Project. Provide consultation related to improving safety planning within 988 Crisis Centers in MA. 2023–present. Role: Expert Advisory Panel Member.

Suicide Care Collaborative Improvement and Innovation Network (CoIIN). Provided technical assistance and consultation to EDC, Zero Suicide institute, and pew Charitable Trusts on best practices related to suicide care. 2024–present. Role: Expert Advisory Panel Member.

EMMANUEL AGU

Member, External Advisory Board of the Biomedical Materials Committee at the State University of New York Polytechnic Institute

CAMILLE NEBEKER

2024–present. Special Government Employee; Patient Engagement — Advisory Committee Member to the Center for Devices and Radiological Health, Food and Drug Administration

ANTHONY ROTHSCHILD

2021–present. Scientific Advisor and Grant Reviewer, American Foundation for Suicide Prevention

MARTHA ZIMMERMANN

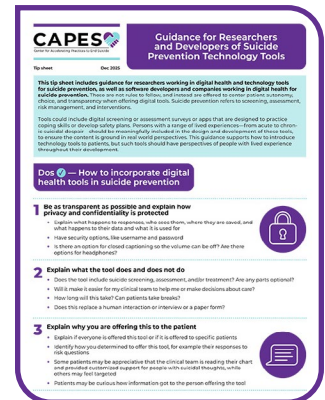
Patient Centered Outcomes Research Institute (PCORI) Convening Stakeholders to Advance Perinatal Suicide Prevention Research (Participant) 2025

EFFECTING CHANGE: COMMUNITY COLLABORATIONS

CAPEL LIVED EXPERIENCE ADVISORY BOARD (CLEAB)

The CLEAB had a productive year! They developed a tip sheet in December 2025: “Guidance for Researchers and Developers of Suicide Prevention Technology Tools.”

As digital tools play an increasing role in suicide prevention, this guidance was shaped with meaningful input from people with lived experience and reflects decades of research and implementation practice. The tip sheet prioritizes what matters most to this group: patient autonomy, transparency, choice, and compassion.



WELCOME OUR NEWEST MEMBER, SARA DO!

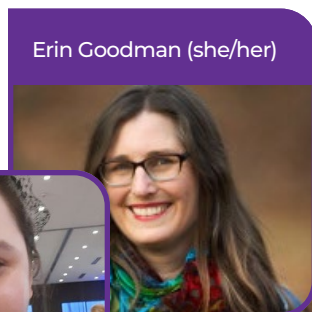


Sara Do (she/her) began with the CLEAB in August 2025. A Certified Peer Specialist (CPS) and Mindfulness Mentor, she combines her background in operations, strategic planning, and staff development with her personal lived experience to foster compassionate, collaborative innovation in mental health and wellbeing. She facilitates peer support groups and serves as a physical educator, teaching wellness classes and workshops for local communities. Her work integrates event coordination, mentoring, and user-focused instructional design.

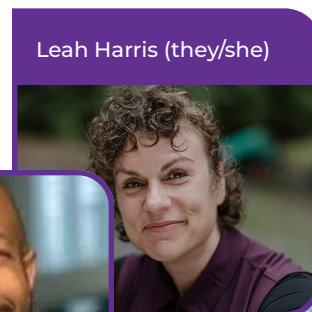
Sara joins our existing Advisory Board members:



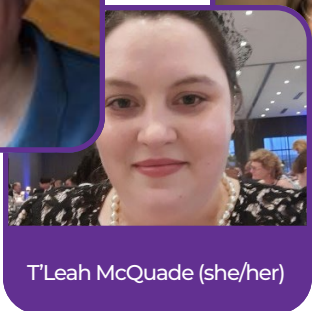
Rick Strait (he/him)



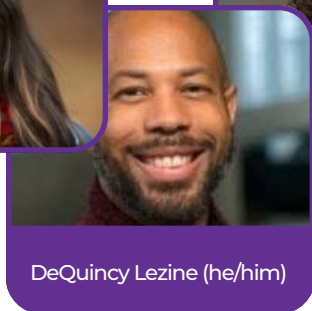
Erin Goodman (she/her)



Leah Harris (they/she)



T'Leah McQuade (she/her)



DeQuincy Lezine (he/him)



Jennifer Glynn (she/her)

DISSEMINATION: SOCIAL MEDIA HIGHLIGHTS

BLUESKY

- 175 total followers
- 88 new posts

FACEBOOK

New Followers: 21

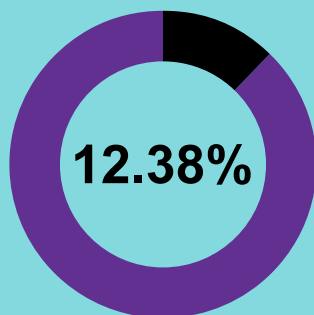
Views: 8.1K

Reactions: 450

Reach: 3.9K

Engagements: 744

Engagement Rate:



INSTAGRAM

- 70 new followers
- 88 posts, 199 stories
- 22.5K impressions
- 6K post reach
- 731 likes
- 43 comments

LINKEDIN

New Followers: 144

Posts: 103

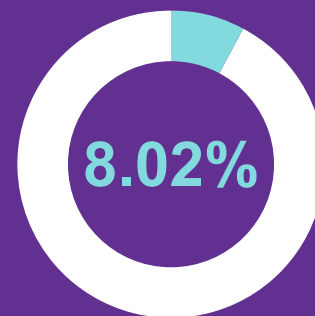
Impressions: 17.9K

Likes: 512

Comments: 37

Shares: 107

Engagement Rate:



TWITTER/X

- 4 new followers
- 95 posts
- 31 retweets
- 6.5K impressions
- 293 engagements
- 55 replies
- 165 likes

DISSEMINATION: FOLLOW US



BLUESKY

[@CAPESuicidePrev.bsky.social](https://www.bsky.social/CAPESuicidePrev)



FACEBOOK

[@CAPESuicidePrevention](https://www.facebook.com/CAPESuicidePrevention)



INSTAGRAM

[@CAPESuicidePrevention](https://www.instagram.com/CAPESuicidePrevention)



LINKEDIN

[CAPES Suicide Prevention](https://www.linkedin.com/company/CAPESuicidePrevention)



TWITTER/X

[@CAPESuicidePrev](https://twitter.com/CAPESuicidePrev)

DISSEMINATION: QUARTERLY NEWSLETTERS



Center for Accelerating Practices to End Suicide

[CAPES News](#)
[CAPES Scholars](#)
[CAPES Projects](#)
[AFSP Central MA](#)

CAPES Monthly Newsletter



Word from Our Director

Welcome to the sixth edition of our newsletter from the NIMH-funded Center for Accelerating Practices to End Suicide (CAPES) at UMass Chan Medical School! We sincerely hope that everyone was able to enjoy a relaxing holiday season. There have been two important developments in the past few months. First, we received a planning grant from the [Four Pines Fund](#), a foundation that promotes evidence-based suicide care. This grant will help us prepare a proposal

Quarter 1

Announcing our Year 2 CAPES Scholars Cohort

[Check out our Year 2 CAPES Scholars Here](#)

With the New Year in full swing, we are thrilled to announce our new cohort of Established and Emerging Scholars for Year 2. The goal of the CAPES Scholar program is to strengthen the suicide prevention workforce and foster the next generation of research-driven suicide prevention experts. Please join us in congratulating and extending these scholars a very warm welcome to the CAPES community!

Established Scholars include scientists with suicide research experience who have not studied technologies, as well as those not previously engaged in suicide prevention research but with an established record of productivity in a complementary scientific field that offers new perspectives and methods to advance suicide prevention science.

Emerging Scholars include graduate students, postdoctoral researchers, and early-stage investigators who can work with and learn from CAPES Faculty. This will be done through formalized mentoring, in-house/guest didactics, and meetings with potential practice partners from new community settings.



Center for Accelerating Practices to End Suicide

[CAPES News](#)
[CAPES Scholars](#)
[CAPES Projects](#)
[E-Scholarship](#)

CAPES Monthly Newsletter



Word from Our Director

Welcome to the seventh edition of our newsletter from the NIMH-funded Center for Accelerating Practices to End Suicide (CAPES) at UMass Chan Medical School. As we all know, the ongoing changes in diversity, equity, and inclusion efforts have far-reaching impacts, both directly and indirectly. The recent threat to NIH funding through attempts to cut to indirect costs is also concerning, as medical schools and research enterprises depend on this funding. Although a judge

Quarter 1.5

Announcing our Year 2 Pilot Projects

[Check out our Year 2 Pilot Projects Here](#)

We are excited to announce the new Year 2 Pilot Projects that have been awarded to CAPES Emerging Scholars, Dr. Zimmermann, and one of our CAPES faculty, Dr. Dixon-Gordon! Please join us in recognizing these promising projects!

Beta-Testing Reaching Calm: Exploring Digital Approaches to Address Suicide Risk in Obstetric Settings



Reaching Calm is a multicomponent digital intervention to prevent perinatal anxiety disorders in obstetric settings. Reaching Calm includes a 1) digital Anxiety Sensitivity Intervention, 2) obstetric professional training, and 3) implementation protocol to integrate anxiety prevention into the obstetric workflow. In this pilot project, we will adapt Reaching Calm to address suicide risk by using a community-engaged, user-centered design approach to integrate a [Computerized Adaptive Test \(CAT\)](#)



Center for Accelerating Practices to End Suicide

[CAPES News](#)
[CAPES Scholars](#)
[CAPES Projects](#)
[E-Scholarship](#)

CAPES Monthly Newsletter



Word from Our Director

Welcome to the eighth edition of our newsletter from the NIMH funded Center for Accelerating Practices to End Suicide (CAPES) at UMass Chan Medical School. CAPES continues to be a vibrant hub for suicide prevention research, professional development and training, and community building. We're thrilled to share our [Year 2 Impact Report](#), which shows the significant progress of our Center on our mission to prevent suicide and accelerate delivery of

Quarter 2

Highlights of Progress in our Annual Impact Report

The CAPES Evaluation Unit is excited to share our Year 2 Impact Report which showcases our Center's work to prevent suicide and accelerate delivery of evidence-based, compassionate suicide care.

Highlights include:

- New grant by the Four Pines Fund, a philanthropic foundation focused on improving evidence-based suicide care.
- Outstanding scholarly impact: CAPES Faculty have published 139 peer-reviewed articles in high-impact journals in Year 2.
- Milestones met by our Methods and Administrative Cores and teams, often in the face of incredible challenges and alongside our partner agencies and other practice-based suicide prevention centers funded by NIMH.
- New pilot projects and scholars
- Faculty awards and spotlights

[CHECK OUT THE YEAR 2 IMPACT REPORT](#)

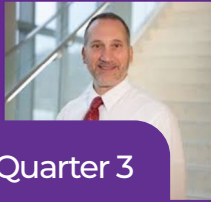
Massachusetts Department of Public Health Suicide Prevention Conference Next Week Training Featuring Dr. Rachel Davis-Martin



Center for Accelerating Practices to End Suicide

CAPES News CAPES Events CAPES Projects E-Scholarship

CAPES Monthly Newsletter



Word From Our Director

Welcome to the 11th edition of our newsletter from the NIMH-funded Center for Accelerating Practices to End Suicide (CAPES) at UMass Chan Medical School.

Our annual **CAPES Retreat** was on May 20 and 21, 2025. Recordings are available now; note that some presentations were live only—even more reason to attend live if you can next year!

Quarter 3

Save the Date and Register for the Annual CAPES Innovation Summit



For Who: Open to the Community and especially CAPES faculty, scholars, consultants, and staff and colleagues within suicide prevention, implementation science, machine learning, and technology.

By Who:
- **Julie Angerhofer**, PhD, MPH (Associate Investigator, Kaiser Permanente Washington Health Research Institute)
- **Kurt Michael**, PhD (Senior Clinical Director, The JED Foundation)
- **Leah McQuade**, AA (CAPES Lived Experience Advisory Board Member, Student Intern, University of Massachusetts Lowell)

What: CAPES Innovation Summit, organized with support from Education Development Center and focused on using the Zero Suicide Framework to advance CAPES technologies and implementation of evidence based suicide care.

When: Monday, 22 September 2025, 2–3:30 p.m. EDT

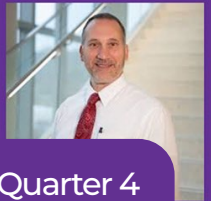
Where: Virtual, Zoom



Center for Accelerating Practices to End Suicide

CAPES News CAPES Events CAPES Projects E-Scholarship

CAPES Quarterly Newsletter

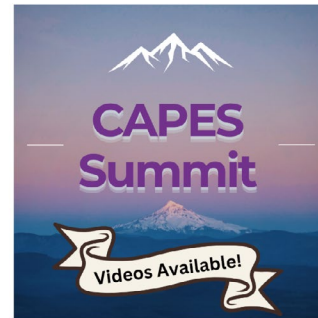


Word from our Director

We had an excellent Suicide Prevention month, with three pivotal events. **First**, our Psychiatry Grand Rounds featured Dr. Michael Allen from University of Colorado Anschutz Medical Campus, titled "From Risk Detection to Intervention: Feasible Suicide Care at Scale." Recordings will be available soon on the UMass Chan Psychiatry and Behavioral Sciences Website.

Quarter 4

Annual CAPES Innovation Summit Recordings available



CAPES Innovation Summit, organized with support from Education Development Center and focused on using the Zero Suicide Framework to advance CAPES technologies and implementation of evidence based suicide care. This was a fantastic event with a lot of positive feedback and sharing of resources!



APPENDIX I:

CAPES PUBLICATIONS 2025

The following is a list of all publications by CAPES faculty in Year 3.

- Abrams, A. H., Johnson, R. L., Brooks-Russell, A., Betz, M. E., & Wright-Kelly, E. (2025). Racial disparities in concerns and experiences with police-involved shootings among Colorado adults. *Journal of the National Medical Association, 117*(1), 36–41. PMID: 39939209.
- Allen, R., deSouza, I. S., Wakai, A., Richards, R., Ardilouze, A., Dunne, E., Rovic, I., Benabbas, R., Zehtabchi, S., & Sinert, R. (2025). Hospitalize or discharge the emergency department patient with syncope? A systematic review and meta-analysis of direct evidence for SAEM GRACE. *Academic Emergency Medicine. <https://doi.org/10.1111/acem.15111>*
- Alshawmar, M., Tulu, B., Wilson, E. V., & Hall-Phillips, A. (2025). Personality-Driven Variations in Fitness App Affordance Actualization Among Adults: Quantitative Survey Study. *JMIR Formative Research, 9*(1), e72691.
- Alshawmar, M., Tulu, B., Wilson, V., & Hall-Phillips, A. (2025). Affordance Actualization and Post-Adoption Perceived Usefulness: An Investigation of the Continued Use of Fitness Apps. *Systems, 13*(8), 652.
- Arias, S. A., Gaudiano, B. A., Epstein-Lubow, G., Zylberfuden, S., & Weinstock, L. M. (2025). Considerations and challenges when using clinical and vital record review for suicide research. *Journal of Patient Safety, 21*(3), e8–e17.
- Arias, S. A., Weinstock, L. M., Toor, M., Cinader, M., Schall, G., Brown, G. K., Stanley, B., & Johnson, J. E. (2025). Baseline and lifetime suicide behaviors and risk factors among pretrial jail detainees enrolled in a suicide prevention trial. *Psychiatric Services*. (in press).
- Barnard, L. M., Wright-Kelly, E., Brooks-Russell, A., & Betz, M. E. (2025). Firearm Type and Number of People Killed in Publicly Targeted Fatal Mass Shooting Events
- Barnard, L. M., Betz, M. E., Frattaroli, S., Knoepke, C. E., Christy, A., Schleimer, J. P., Pear, V. A., McCarthy, M., Kapoor, R., Norko, M. A., Rowhani-Rahbar, A., Ma, W., Wintemute, G. J., Swanson, J. W., Easter, M. M., & Zeoli, A. M. (2025). Extreme risk protection order use in six US states: a descriptive study. *Injury Epidemiology, 12*(1), 30.

APPENDIX I: CAPES PUBLICATIONS 2025

- Benz, M. B., Rafferty, B. A., Arias, S. A., Rabasco, A., Miller, I., Weinstock, L. M., Boudreaux, E. D., Camargo, C. A., & Gaudiano, B. A. (2025). Means to an end: Characteristics and follow-up of emergency department patients with a history of suicide attempt via medication overdose. *Academic Emergency Medicine*, 32(2), 147–157. <https://doi.org/10.1111/acem.15023>
- Betz, M. E., Meza, K., Friedman, K., Mocerri-Brooks, J., Johnson, M. L., Simonetti, J., Baker, J. C., Bryan, C. J., & Anestis, M. D. (2025). “Whether it’s your weapon or not, it’s your home”: Military spouse perspectives on personal firearm storage. *BMJ Military Health*, 171(3), 227–232. PMID: 38135459.
- Billman Miller, M. G., Denning, D. M., Alvarez, J. C., Castro-Lebron, J., Bakoyema, S., & Brown, T. A. (2025). Examining eating disorder pathology and self-stigma of help-seeking behaviors in a community sample of sexual minority adults: An intersectional investigation of race and gender. *Eating Disorders: The Journal of Treatment and Prevention*.
- Branley, C. E., Lee, M. R., Person, S., Hager, K., & Lemon, S. C. (2025). Association Between Parent-Perceived Neighborhood Support on Food Insecurity and Public Benefit Use Among US Children. *Preventive Medicine Reports*, 57, 103174. <https://doi.org/10.1016/j.pmedr.2025.103174>
- Bryan, C. J., Simon, P., Wilkinson, S. T., Allen, M. H., Perez, J., Adler, C., Moon, K., Astorino, L., Carpenter, K. M., Misquitta, L., Brownlowe, K., Khazem, L., Hay, J., Starkey, A. G., Tartaglia, J., Winston, H., Simpson, S., Dager, A. D., & Feuerstein, S. (2025). A Digital Therapeutic Intervention for Inpatients With Elevated Suicide Risk: A Randomized Clinical Trial. *JAMA Network Open*, 8(8): e2525809.
- Budhwani, H., Yigit, I., Nguyen, H. L., Bruce, J., & Bond, C. L. (2025). Minority adolescents’ HIV PrEP awareness and preferences in Alabama. *BMC Research Notes*, 18(1), 210. <https://doi.org/10.1186/s13104-025-07273-5>
- Butterfield, N. N., Luzon Rosenblut, C., Fava, M., Correll, C. U., Rothschild, A. J., Murrough, J. W., Mathew, S. J., Beatch, G. N., Grayson, C., Harden, C., Qian, J., McIntosh, J., Namdari, R., & Kenney, C. (2025). Azetukalner, a Novel KV7 Potassium Channel Opener, in Adults With Major Depressive Disorder: A Randomized Clinical Trial. *JAMA Network Open*, 8(5), e2514278. <https://doi.org/10.1001/jamanetworkopen.2025.14278>
- Byatt, N., Zimmermann, M., Lightbourne, T., Sankaran, P., Haider, U. K., Sheldrick, R. C., Eliasziw, M., & Moore Simas, T. A. (2025). Addressing Perinatal Mood and Anxiety disorders in Obstetric Settings: Results of a Cluster Randomized Controlled Trial of Two Approaches. *American Journal of Obstetrics & Gynecology MFM*.

APPENDIX I: CAPES PUBLICATIONS 2025

- Carrington, M., Stanley, I., Anestis, M., Johnson, R., Moceri-Brooks, J., Bryan, C., Johnson, M., Baker, J., Bryan, A., Xiao, M., & Betz, M. E. (2025). Safety or Risk? Exploring Perceptions of Firearm-Related Risks Among Military Service Members and Civilian Employees at a Military Installation. *Journal of Injury and Violence Research*, 17(2). <https://jivresearch.org/jivr/index.php/jivr/article/view/1938>
- Carter, E., Banerjee, S., Alexopoulos, G. S., Bingham, K. S., Marino, P., Meyers, B. S., Mulsant, B. H., Neufeld, N. H., Rothschild, A. J., Voineskos, A. N., Whyte, E. M., Flint, A. J., & STOP-PD II Study Group. (2025). Prediction of remission of pharmacologically treated psychotic depression: A machine learning approach. *Journal of Affective Disorders*, 381, 291–297. <https://doi.org/10.1016/j.jad.2025.04.013>
- Cave, D. R., Hanscom, M., Bledsoe, J., Madahian, S., Hyatt, B., Marya, N., Baptista, V., Schneider, D., Reed, G., Albo, B., Min, M., & Barton, B. (2025). Chronic Stenosing Enteritis: A Variant of Chronic Non-specific Stenosing Ulceration (CNSU) that Is Distinct from Crohn's Disease. *Digestive Diseases and Sciences*, 70(4), 1449–1456. <https://doi.org/10.1007/s10620-024-08815-w>
- Chamberlin, K. T., DiTullio, C., Rossman, J., Barton, B. A., Reznick, M., & Kotkowski, K. (2025). Randomised controlled trial of audit-and-feedback strategies to reduce imaging overutilisation in the emergency department. *BMJ Quality & Safety*, 0, 1–7. <https://doi.org/10.1136/bmjqs-2024-018374>
- Chamberlin, K. T., DiTullio, C., Rossman, J., Barton, B., Reznick, M., & Kotkowski, K. (2025). Randomised controlled trial of audit-and-feedback strategies to reduce imaging overutilization in the emergency department. *BMJ Quality & Safety*. Epub ahead of print. <https://doi.org/10.1136/bmjqs-2024-018374>
- Celik, U., Liu, F., Kobayashi, K., Ellison III, R. T., Guilarte-Walker, Y., Mack, D. A., Shi, Q., & Zai, A. (2025). Machine Learning-Enhanced Surveillance for Surgical Site Infections in Patients Undergoing Colon Surgery: Model Development and Evaluation Study. *JMIR Formative Research*, 9, e75121.
- Clayton, E. W., Rose, S., Nebeker, C., Novak, L., Bensoussan, Y., Chen, Y., Collins, B. X., Cordes, A., Evans, B. J., Ferryman, K. S., Hurst, S., Jiang, X., Lee, A. Y., McWeeney, S., Parker, J., Bélisle-Pipon, J. C., Rosenthal, E., Yin, Z., Yracheta, J., & Malin, B. A. (2025). Biomedical data repositories require governance for artificial intelligence/machine learning applications at every step. *JAMIA Open*, 8(6), ooaf134. <https://doi.org/10.1093/jamiaopen/ooaf134>
- Costigan, A. D., Reznick, M. A., Slocum, C., Canellas, M. M., Sanseverino, A. M., Kan, V., Forget, J., & O'Connor, L. C. (2025). Dynamic Appraisal of Situational Aggression Score at Emergency Department Triage Is Associated With Behavioral Intervention: A Cross-Sectional Study. *Academic Emergency Medicine*. <https://doi.org/10.1111/acem.70082>

APPENDIX I: CAPES PUBLICATIONS 2025

- Costigan, A., O'Connor, L., Slocum, C., Barry, K., Canellas, M., Sanseverino, A., Proudman, E., Plainte, K., Shatsky, M., Forget, J., & Reznek, M. A. (2025). The Implementation of Dynamic Appraisal of Situational Aggression Score at Emergency Department Triage. *Annals of Emergency Medicine*. <https://doi.org/10.1016/j.annemergmed.2025.02.023>
- Cook, J. A., Burke-Miller, J., Jonikas, J., Aranda, F., Mullen, M., Davis, M., & Sabella, K. (2025). Social determinants, mental well-being, and disrupted life transitions among young adults with disabling mental health conditions. *Journal of Behavioral Health Services Research*, 1–19.
- Cummins, J. A., Gerber, B. S., Fukunaga, M. I., Henninger, N., Kiefe, C. I., & Liu, F. (2025). In-Hospital Mortality Prediction among Intensive Care Unit Patients with Acute Ischemic Stroke: A Machine Learning Approach. *Health Data Science*, 5, 0179. <https://doi.org/10.34133/hds.0179>
- Dabbagh, Z., Najjar, R., Kamberi, A., Gerber, B. S., Singh, A., Soni, A., Cutrona, S. L., & McManus, D. D., Faro, J. M. (2025). Usability and Implementation Considerations of Fitbit and App Intervention for Diverse Cancer Survivors: Mixed Methods Study. *JMIR Cancer*, 11, e60034. <https://doi.org/10.2196/60034>
- Davis-Martin, R. E. (2025). Technology in Integrated Healthcare and Family Systems. Editorial Review. *Families, Systems, and Health*.
- Denning, D. M., Billman Miller, M. G., Kakar, V., Yogaratnam, N., Johnson, N., & Brown, T. A. (2025). Examining the prospective effects of multiple sources of minority stress on disordered eating in sexual minority men of color. *Stigma and Health*.
- Denning, D. M., Gebhardt, E. S., Alvarez, J. C., Huffman, S., & Brown, T. A. (2025). Evaluating four versions of the difficulties in emotion regulation scale (DERS) in a sample of sexual minority adults. *Psychology of Sexual Orientation and Gender Diversity*.
- Denning, D. M., & Brown, T. A. (2025). Examining the prospective effects of alexithymia and minority stress on emotion regulation in sexual minority adults. *Affective Science*.
- Denning, D. M., Venter, C., Gebhardt, E. S., & Brown, T. A. (2025). Associations between minority stress and depression and anxiety symptoms at the intersection of multiple identities in sexual minority people of colour. *Stress and Health*.
- Denning, D. M., Woods, S. E., Haliczner, L. A., & Dixon-Gordon, K. L. (2025). The roles of affect valence and pain in differentiating young women with and without histories of nonsuicidal self-injury. *Suicide and Life-Threatening Behaviors*.

APPENDIX I: CAPES PUBLICATIONS 2025

- Dixon-Gordon, K. L., Waite, E. E., Denning, D. M., Isbell, L., Schoenfeld, E. M., Soares, W., Dehon, E., & Kalmakis, K. (2025). An experimental examination of patient psychiatric status on emergency department provider attitudes: Predictors and effects on care in hypothetical vignettes. *Stigma and Health*. <https://doi.org/10.1037/sah0000636>
- Djamasbi, S. (2025). See What Users See: Enhancing User-Centered Product Innovation with Eye Tracking. *Journal of UX*, 20(3), 89–101.
- Drazdowski, T. K., Kelly, L., Livingston, N. R., Sheidow, A. J., & McCart, M. R. (2025). Within-person bidirectional relations between sleep problems and alcohol, cannabis, and co-use problems in a representative U.S. sample. *Substance Use & Misuse*, 1–10.
- Fard, R. S., Agu, E., Busaranuvong, P., Kumar, D., Gautam, S., Tulu, B., & Strong, D. (2025). Multimodal AI for Home Wound Patient Referral Decisions from Images with Specialist Annotations. *IEEE Journal of Translational Engineering in Health and Medicine*, 13, 341–353.
- Finlay, A. K., Pivovarova, E., Yu, M., Timko, C., Binswanger, I. A., Smelson, D., Stimmel, M., Taylor, E., & Harris, A. H. S. (2025). Receipt of Medications for Opioid Use Disorders Among Veterans by Race/Ethnicity and Legal Involvement: An Observational Study of Electronic Health Records. *Health & Justice*.
- Fritchen, R. E., Billman Miller, M. G., Denning, D. M., Smith, A. R., & Brown, T. A. (2025). Psychometric evaluation of the multi-dimensional assessment of interoceptive awareness-2 (MAIA-2) in a sample of transgender and gender nonconforming adults. *Assessment*.
- Friedmann, P., Wilson, D., Thomas, S., Bernson, D., Pivovarova, E., Ferguson, W., Hoskinson, R., Rottapel, R., Bovell-Ammon, B., Gaba, A., Morgan, J., Sens, T., Hayes, E., & Evans, E. (2025). Medications for Opioid Use Disorder in County Jails: Outcomes After Release. *New England Journal of Medicine*.
- Fuller, S. N., Kelly, L. M., McNaboe, L. A., Bradley, X. G., Winkler, C. J., Wolek, C. E., Wilkes, A. L., Bogui, P. C., Taylor, P. E., Nichanametla, G. R., Patrick, D. P., & Babcock, M. (2026). What is said, meant, heard: Practitioner-patient understanding during delivery of diagnoses in the emergency department. *Patient education and counseling*, 145, 109490. <https://doi.org/10.1016/j.pec.2026.109490>
- Gentry, M. M., Patapoff, M. A., Ross, S., Williams, A. P., & Palmer, B. W. (2025). Loneliness in schizophrenia: The mediating roles of asocial beliefs and mattering. *International Journal of Social Psychiatry*. <https://doi.org/10.1177/00207640251382463>

APPENDIX I: CAPES PUBLICATIONS 2025

- Gentry, M. M., Manjanatha, D., Patapoff, M. A., & Palmer, B. W. (2025). Association of early adversity and self-compassion with feelings of search for and presence of meaning in life. *Journal of Adult Development*. <https://doi.org/10.1007/s10804-025-09547-5>
- Gentry, M. M., Zoleikhaeian, D., Wong, H. J., Patapoff, M. A., Williams, A. P., Ross, S., Tu, X. M., & Palmer, B. W. (2025). Within-person fluctuations in momentary loneliness among people with schizophrenia. *International Journal of Social Psychiatry*. <https://doi.org/10.1177/00207640251383127>
- Goins, K. V., Salcedo, A., Mook, G., & Lemon, S. C. (2025). Potential for Increasing Physical Activity through an e-Bike Pilot Program to Reduce Greenhouse Gas Emissions. *Journal of Healthy Eating and Active Living*, 5(1), 64–75.
- Goulding, M., Ryan, G., Stevens, E., Person, S., Goldberg, R., Garg, A., & Lemon, S. C. (2025). Pediatric Primary Care Physicians' Perceptions of, and Processes for, Pediatric Blood Pressure Screening, Follow-up, and Hypertension Management. *Children (Basel)*, 12(2), 185. <https://doi.org/10.3390/children12020185>
- Griswold, M. K., Crawford, S. L., Person, S. D., Rosenberg, L., Palmer, J. R., & Cozier, Y. C. (2025). Neighborhood Socioeconomic Status and Breastfeeding Initiation and Duration Among Primiparous Black Women. *Breastfeeding Medicine*. <https://doi.org/10.1089/bfm.2024.0263>
- Hanss, K., Denning, D. M., Flatt, R., Sanzari, C., Murray, S. B., Lavender, J., Mitchison, D., Compte, E., Mond, J., Blashill, A., Nagata, J., Keel, P. M., Harriger, J., Brown, T. A., & Gorrell, S. (2025). Evaluating the Muscularity-oriented Eating Test: Factor structure and psychometric properties among athletes and across gender. *Eating Behaviors*.
- Hargraves, J. L., Cosenza, C., Mullin, D. J., & Cleary, P. D. (2025). A New CAHPS Measure of Patient Experiences With Mental Health and Substance Use Care. *Health Services Research*, 60(5). <https://doi.org/10.1111/1475-6773.14623>
- Hallaj, S., Heinke, A., Kalaw, F. G. P., Gim, N., Blazes, M., Owen, J., Dysinger, E., Benton, E. S., Cordier, B. A., Evans, N. G., Li-Pook-Than, J., Snyder, M. P., Nebeker, C., Zangwill, L. M., Baxter, S. L., McWeeney, S., Lee, C. S., Lee, A. Y., & Patel, B. (2025). Open Data Sharing in Clinical Research and Participants Privacy: Challenges and Opportunities in the Era of Artificial Intelligence. *arXiv*. Preprint.
- Hosgor, M., Nicholas, J. K., Denning, D. M., & Brown, T. A. (2025). The association of intraminority stress with substance use in sexual minority men: The moderating roles of community connectedness and coping self-efficacy. *Sexual and Gender Diversity in Social Services*.

APPENDIX I: CAPES PUBLICATIONS 2025

- Huff, N. R., Arnold, D., & Isbell, L. M. (2025). The Community Attitudes Towards Mental Illness (CAMI) Scale Measure 40 Years Later? An Investigation Using Confirmatory Factor Analysis and Free-Response Data. *Journal of Community Psychology*, 53(2), e70005. <https://doi.org/10.1002/jcop.70005>
- Huong, G. N., Nguyen, H. L., Goldberg, R. J., Epstein, M. M., Allison, J. J., Pham, L. Q., Giang, L. M., Nguyen, S. M., Nguyen, N. D., Nguyen, L. T. T., Van, Q. L., Van, T. T., & Huong, T. T. (2025). Thirty-Year Trends (1991–2020) in Breast Cancer Incidence Rates: Hanoi, Vietnam. *JCO Global Oncology*, 11, e2400570. <https://doi.org/10.1200/GO-24-00570>
- Isbell, L. M., Le, V., Huff, N. R., Beals, K., Tager, J. B., Kimball, E., Whillock, S., & Boudreaux, E. (2025). Medical Care for Patients with Mental Health and/or Substance-Use Disorders: A Qualitative Investigation of Emergency Department Patient Experiences and Recommendations. *Health Services Research*. <https://doi.org/10.1111/1475-6773.14617>
- Jonikas, J., Aranda, F., Burke-Miller, J. K., Sabella, K., Mullen, M., Davis, M., & Cook, J. A. (2025). Prevalence of chronic physical conditions and physical multimorbidity among emerging adults with serious mental health conditions. *Psychiatric Rehabilitation Journal*, 48(2), 89–98. <https://doi.org/10.1037/prj0000637>
- Joshi, M., Kim, K., Pickard, A. S., Sharp, L. K., Gerber, B. S., & Touchette, D. R. (2025). Mobile health intervention for type 2 diabetes management delivered by community health workers and clinical pharmacists: Intervention costs and healthcare resource utilization. *American Journal of Health-System Pharmacy*. <https://doi.org/10.1093/ajhp/zxaf153>
- Joshi, M., Pickard, A. S., Kim, K., Sharp, L. K., Gerber, B. S., & Touchette, D. R. (2025). Health-related quality of life in racial and ethnic minority adults with type 2 diabetes: Validity and responsiveness of the EQ-5D-3L. *Quality of Life Research*. <https://doi.org/10.1007/s11136-025-04070-2>
- Julce, C., Flahive, J., Lightbourne, T., Podila, S., Mahanna, A., Zimmermann, M., Sheldrick, R. C., Moore Simas, T. A., & Byatt, N. (2025). Descriptive Characteristics of Psychiatric Medication Discontinuation Among Perinatal Women With Depressive Symptoms. *Early Intervention in Psychiatry*, 19(6), e70070. <https://doi.org/10.1111/eip.70070>
- Kamberi, A., Weitz, B., Flahive, J., Eve, J., Najjar, R., Liaghat, T., Ford, D., Lindenauer, P., Person, S., Houston, T. K., Gauvey-Kern, M. E., Lobien, J., Sadasivam, R. S. (2025). Testing a Machine Learning-Based Adaptive Motivational System for Socioeconomically Disadvantaged Smokers (Adapt2Quit): Protocol for a Randomized Controlled Trial. *JMIR Research Protocols*, 14, e63693. <https://doi.org/10.2196/63693>

APPENDIX I: CAPES PUBLICATIONS 2025

- Kelly, L. M., Flori, J. N., Sabella, K. A., & Zajac, K. (2025) Demographic differences among adults and emerging adults with, without, and in recovery from alcohol and other drug use disorders. *Substance Use & Misuse*, 1–11. Advance online publication. <https://doi.org/10.1080/10826084.2025.2577281>
- Kelly, L. M., Kelly, M. M., Ponce-Martinez, C., Sabella, K. A., & Yonkers, K. A. (2026). Characterizing sociodemographic differences in substance use treatment need and receipt among pregnant women in the U.S. *Addictive Behaviors*, 173, 108562. <https://doi.org/10.1016/j.addbeh.2025.108562>
- Khanna, A., Larkin, C., Davis-Martin, R. E., Micklus, I. K., Sefair, A. V., Roy, A., Klaucke, C. G., Reznek, M. A., & Boudreaux, E. D. (2025). Patient and Health Care Provider Experiences With Suicide-Related Tele-Mental Health Evaluations in the Emergency Department: Multiphase Qualitative Study. *JMIR Mental Health*, 12, e72541. <https://doi.org/10.2196/72541>
- Kitsiou, S., Gerber, B. S., Buchholz, S. W., Kansal, M. M., Sun, J., Pressler, S. J. (2025). Patient-Centered mHealth Intervention to Improve Self-Care in Patients With Chronic Heart Failure: Phase 1 Randomized Controlled Trial. *Journal of Medical Internet Research*, 27, e55586. <https://doi.org/10.2196/55586>
- Knorr, A. C., Wallace, G. T., Schatten, H. T., Prince, M. A., Boudreaux, E. D., Miller, I., Camargo, C. A. Jr., Conner, B. T., & Arias, S. A. (2025). Characteristics differentiating near-term multiple, distal multiple, and single suicide attempters during the 12-months post-discharge from the emergency department. *Journal of Psychiatric Research*, 191, 711–719.
- Knoepke, C. E., Meza, K., Portz, J. D., Ranney, M. L., Fischer, S. M., Omeragic, F., Greenway, E., Castaneda, M., Matlock, D. D., & Betz, M. E. (2025). Whether and how to store firearms in the home: Qualitative insights from care partner experiences in the Safety in Dementia Trial. *Journal of the American Geriatrics Society*, 73(2), 379–388.
- Kragen, B., Zaidi, M., Shimada, S. L., Gerber, B. S., Lozier, C., & Chilingirian, J. A. (2025). Physicians' Experiences Using Secure Messaging for Diabetes Management: A Qualitative Study. *JMIR Diabetes*, 10, e70816. <https://doi.org/10.2196/70816>
- Lewin, Z., Snow, S., Lee, J. A., & Wilkie, G. (2025). Glucagon-like Peptide-1 Receptor Agonists among Pregnancies with Pregestational Diabetes and Its Relationship with Congenital Malformations. *American Journal of Perinatology*.
- Li, R., Wu, Y., Yang, X., & Su, S. (2025). “We had no better Choice”: Mixed-methods Analysis of parent-child separation and reunification in Chinese immigrant families with separated youth “satellite babies.” *Asian American Journal of Psychology*. <https://doi.org/10.1037/aap0000407>

APPENDIX I: CAPES PUBLICATIONS 2025

- Littenberg, B., Bonnell, L., Callas, P., Hitt, J., Macchi, C. R., Martin, M., McEntee, M. L., Mullin, D. J., Rose, G. L., & van Eeghen, C. (2025). Degree of Behavioral Health Integration and Patient Outcomes. *Journal of the American Board of Family Medicine* (in press).
- Maietta, L. N., Bronson, I., Cabral, M., Stokes, C., Radillo Mendoza, K., Johnson, O., Banerjee, D., & Rothschild, A. J., Rubin, R. S. (2025). Post-orgasmic illness syndrome and its effects on self esteem and relationships: a survey. *International Journal of Impotence Research*. <https://doi.org/10.1038/s41443-025-01103-9>
- Malaktaris, A., McLean, C. L., Casmar, P., Kangas, J., Myers, H., Chu, G., Phillips, R., Maglione, J., Palmer, B. W., & Lang, A. J. (2025). Compassion meditation for distressed older Veterans: A feasibility study. *Clinical Gerontologist*, 48(4), 816–827. <https://doi.org/10.1080/07317115.2024.2322056>
- Martinez, O., Andraka-Christou, B., Pivovarova, E., French, A., Rodriguez-Diaz, C., Morton, S., & Munoz-Laboy, M. (2025). Medical-Legal Partnership: An Approach to Addressing Social and Structural Determinants of Health among People who Use Substances. *Journal of Studies on Alcohol and Drugs*.
- Martinez, O., Rodriguez, S., Maude, A., Brabson, T., Fernandez, I., Yang, C., Davison, R., French, A., Nkwihoreze, H., Momplaisir, F. M., Pozzi, L., Alvarez, D., McCallion, P., Malave-Rivera, S., Kingori, C., Wu, H., Liu, F., Montanez, A., Cruz-Gerena, A., Morton, S., & Munoz-Laboy, M. (2025). Integrating Legal Aid into HIV Care: Evaluating the Impact of a Medical-Legal Partnership on Viral Suppression Outcomes. *AIDS and Behavior*. <https://doi.org/10.1007/s10461-025-04901-w>
- McBride, L. E., Gentry, M. M., Pinkham, A., Granholm, E., Harvey, P. D., Palmer, B. W., Lee, E. E., & Depp, C. A. (2025). The intersection of structural social factors, loneliness, and social activity in individuals with psychotic disorders. *Schizophrenia Research*, 282, 76–84. <https://doi.org/10.1016/j.schres.2025.05.028>
- McInnis, B., Pindus, R., Kareem, D., Vital, D., Hekler, E., & Nebeker, C. (2025). Factors Influencing Informed Consent Preferences in Digital Health Research: Survey Study of Prospective Participants. *Journal of Medical Internet Research*, 27, e63349. <https://doi.org/10.2196/63349>
- McInnis, B., Pindus, R., Kareem, D. H., Cakici, J., Vital, D. G., Hekler, E., & Nebeker, C. (2025). Using dataflow diagrams to support research informed consent data management communications: participant perspectives. *Journal of the American Medical Informatics Association*. <https://doi.org/10.1093/jamia/ocaf004>
- Merton, C., Peacock-Chambers, E., Lightbourne, T., Lemon, S. C., Byatt, N., & Zimmermann, M. (2025). “It’s Harder to Chase Pain than it is to Prevent it”: Provider and patient attitudes towards preventing perinatal mood and anxiety disorders in obstetric settings. *Psychiatric Quarterly*, 1–16.

APPENDIX I: CAPES PUBLICATIONS 2025

- Morena, A. L., Gaias, L. M., Larkin, C., Wang, Y., Kiefe, C., & Boudreaux, E. D. (2025). Clinician profiles of suicide prevention attitudes and confidence and their association with reported suicide prevention practices. *Psychological Services*. <https://doi.org/10.1037/ser0000981>
- Mullin, D. J., Littenberg, B., & Rose, G. L. (2025). The Association Between Patient's Experience of Empathy and Self-Reported Health Status in a Large Multisite Primary Care Trial. *Patient Education and Counseling*. <https://doi.org/10.1016/j.pec.2025.109414>
- Mullin, D. J., Cahill, A., Alford, D., Bergeron, N., Cushman, P., Gonzalez, G., Martin, S., Peterkin, A., Pothos, E., Pulaski, M., Terrien, J., & Fischer, M. (2025). Impact of Asynchronous Training on Student's Confidence and Attitudes Regarding Patients with Opioid Use Disorders. *Substance Use & Addiction Journal*. <https://doi.org/10.1177/29767342251347358>
- Nguyen, T. X., Nguyen, T. T. H., Nguyen, H. T. T., Nguyen, T. N., Nguyen, H. T., Ha, L. H. V., Dinh, H. T., Tran, L. V., Nguyen, A. T., Nguyen, H. L., Goldberg, R. J., Thillainadesan, J., Naganathan, V., & Vu, H. T. T. (2025). Characteristics of moderate-to-severe chronic pain and its association with daily functional impairment among older outpatients in Vietnam. *PLoS One*, 20(11), e0335234. <https://doi.org/10.1371/journal.pone.0335234>
- Nguyen-Thi-Phuong, M., Nguyen-Thi-Thanh, M., Goldberg, R. J., Nguyen, H. L., Dao-Thi-Minh, A., & Duong-Quy, S. (2025). Obstructive Sleep Apnea and Sleep Disorders in Children with Attention Deficit Hyperactivity Disorder. *Pulmonary Therapy*, 11(3), 423–441. <https://doi.org/10.1007/s41030-025-00299-x>
- Nguyen, P. T., Nakamura, R., Shimadzu, H., Abubakar, A. K., Le, P. M., Nguyen, H. V., Nguyen, H. L., Sato, M., Honda, A., Gilmour, S. (2025). Progress and inequality in child immunization in 38 African countries, 2000-2030: A spatio-temporal Bayesian analysis at national and sub-national levels. *PLoS Medicine*, 22(7), e1004664. <https://doi.org/10.1371/journal.pmed.1004664>
- Nguyen Thi Minh L., Nguyen, H. L., Nguyen, L. V. L., Pham, N. M. N., Dang, H., Nguyen, L. A., Nguyen, H. L., Goldberg, R. J. (2025). Successful management of recurrent thrombosis of prosthetic mitral valve induced by eosinophilia secondary to parasitic infection. *BMJ Case Reports*, 18(6), e265654. <https://doi.org/10.1136/bcr-2025-265654>
- Nieto, O., Rosen, A. D., Kalmin, M. M., Li, L., Shoptaw, S. J., Jenkins, S. P., & Tulu, B. (2025). Facilitators and Challenges to Adoption of a Digital Health Tool for Opioid Use Disorder Treatment in Primary Care: Mixed Methods Study. *Journal of Medical Internet Research*, 27, e69953.
- O'Connor, L., Reznek, M. A., Hall, M., & Broach, J. P. (2025). Evaluation of Protocol Fidelity for Prehospital Antibiotic Administration. *Academic Emergency Medicine*. <https://doi.org/10.1111/acem.70015>

APPENDIX I: CAPES PUBLICATIONS 2025

- Palmer, B. W., Arias, S. A., Dunlap, D. R., Gould, G. E., Rahmoun, M. B., Boudreaux, E. D., & Nebeker, C. (2025). The ethics of proximity: Enrolling patients in emergency department hallway beds for suicide research. *Academic Emergency Medicine*, 32, 454–462. <https://doi.org/10.1111/acem.15107>
- Pan, J. H., Kim, J. K., Lee, K., Le, B. L., Lee, J. A., & Trudo, S. P. (2025). Changes in urinary metabolomics after meat-containing meals with and without cruciferous or apiaceous vegetables indicate modulation of nucleotide metabolism in addition to xenobiotic metabolism: a randomized crossover study. *Food Research International*, 214.
- Pereira Ribeiro, J., Stoffers-Winterling, J., Jorgensen, M. S., Juul, S., Matbouriahi, M., Fisher, D. J., van Ballegooijen, W., Kongerslev, M. T., Simonsen, E., Karyotaki, E., Cuijpers, P., Bateman, A., Klein, J. P., Amianto, F., Fonagy, P., Porter, R., Dixon-Gordon, K. L., Chapman, A. L., Thomaes, K., Jacob, G. A., Kramer, U., Philips, B., Franck, J., Majdara, E., Priebe, S., Chanen, A., KNicol, K., Mueser, K., Carlyle, D., Zanarini, M. C., Black, D. W., McMMain, S. F., Dekker, J., & Storebo, O. J. (2025). Treatment moderators of symptom severity in psychotherapy for people with borderline personality disorder: Systematic review with meta-analyses of individual participant data. *Psychotherapy and Psychosomatics* (accepted September 2025).
- Pivovarova, E., Friedmann, P. D., Sawicki, J., & Bratberg, J. (2025). Pharmacist Roles in Enhancing Substance Use Disorder Treatment Access, Continuation, and Education in Problem-Solving Courts. *Journal of the American Pharmacist Association*.
- Pivovarova, E., Planas Garcia, B. Y., Friedmann, P. D., Stopka, T. J., Santelices, C., & Evans, E. A. (2025). Collaborating with Jails to Provide Community-based Medication for Opioid Use Disorder (MOUD): Qualitative Perspectives from MOUD Treatment Providers. *Journal of Addiction Medicine*.
- Pivovarova, E., Taxman, F., Boland, A., Andraka-Christou, B., De La Cruz, B. A., Smelson, D., Lemon, S., & Friedmann, P. D. (2025). Medication for Opioid Use Disorders (MOUD) Providers' Experiences with Recovery Courts: Qualitative Study of Individual and Systemic Factors Impacting Inter-agency Collaboration. *Substance Use & Addiction*.
- Rajabiun, S., Cabral, H. J., Chen, C. A., Lloyd-Travaglini, C., Dugas, J. N., Amburgey, D., Fitzgerald, M., Lemon, S. C., Haas, J. S., Freund, K. M., & Battaglia, T.; TRIP Consortium. (2025). Cost and activity analysis for a citywide patient navigation intervention to engage underserved patients in breast cancer treatment: Findings from the Translating Research Into Practice study. *Cancer*, 131(1), e35671. <https://doi.org/10.1002/cncr.35671>

APPENDIX I: CAPES PUBLICATIONS 2025

- Rajabiun, S., Heath, C. D., Spencer, L. Y., McClair, T. L., Cabral, H. J., Chen, C. A., & Cuca, Y. P. (2025). Using bundled interventions to improve health outcomes for Black cisgender and transgender women: findings from the Black Women First Initiative. *American Journal of Public Health, 115*(S1), S46–S56.
- Rajabiun, S., Wiggins, N., Smack, A., Zhang, X., Williams, B. B., & Lennon-Dearing, R. (2025). Moving Beyond Viral Suppression: Strengthening the Community HIV Workforce to Improve Empowerment and Reduce Stigma in the Memphis Transitional Grant Area. *The Journal of Ambulatory Care Management, 48*(2), 108–122.
- Rade, J. J., Kronsberg, S. S., Kickler, T. S., Vasan, R. S., Xanthakis, V., Naylor, M. G., & Barton, B. A. (2025). Association of Systemic Thromboxane Generation With Risk of Developing Heart Failure. *Journal of the American College of Cardiology, 85*(1), 58–70. <https://doi.org/10.1016/j.jacc.2024.09.010>
- Rabasco, A., Choi, J., Ladis, I., Arias, S. A., Weinstock, L. M., Miller, I., Boudreaux, E. D., Camargo, C. A., & Gaudiano, B. A. (submitted). Who's getting care? Acute treatment utilization following an emergency department visit among adults with serious mental illness and suicidal thoughts and behaviors. *General Hospital Psychiatry*.
- Rabasco, A., Browne, J., Kunicki, Z., Benz, M. B., Arias, S. A., Weinstock, L. M., Miller, I., Boudreaux, E., Camargo, C. A. Jr., & Gaudiano, B. A. (submitted). Suicidal behavior patterns and correlates in high-risk adults after emergency department discharge: a one-year prospective study. *Suicide and Life-Threatening Behavior*.
- Rosen, A. D., Shoptaw, S. J., Li, L., Tulu, B., Nieto, O., Jenkins, S., & Kalmin, M. M. (2025). Clinical Management of Medication-Assisted Treatment for Opioid Use Disorder Using a Mobile Health App Within a Primary Care Clinic: Quasi-Experimental Study. *JMIR Formative Research, 9*, e63526.
- Ruojun, L., Uche, S. C., Agu, E., Grimone, K., Herman, D., Metrik, J., Abrantes, A., & Stein, M. (2025). Discriminating between Marijuana and Alcohol Gait Impairments using Tile CNN with TICA Pooling. *IEEE Open Journal of Engineering in Medicine & Biology*.
- Ryan, G. W., Goulding, M., Mejia Agudelo, D., Simms, S., Spano, M., Arenas, J., Becker, S., Radu, S., Lemon, S. C., Rosal, M., Pbert, L., & Trivedi, M. (2025). Advancing Equitable Participation in Pediatric Clinical Trials Through Cognitive Interviewing. *Pediatrics, 155*(1), e2024068666. <https://doi.org/10.1542/peds.2024-068666>
- Sabella, K., & Lane, I. A. (2025). A qualitative exploration of diagnostic shifts and medication changes among young adults with mental health conditions. *International Journal of Behavioral Medicine*. <https://doi.org/10.1007/s12529-025-10390-x>

APPENDIX I: CAPES PUBLICATIONS 2025

- Sankaran, P., Byatt, N., Haider, U. K., Zimmermann, M., Moore Simas, T. A., Sheldrick, R. C., Eliasziw, M., & Lightbourne, T. (2025). Addressing Perinatal Mood and Anxiety disorders in Obstetric Settings: Results of a Cluster Randomized Controlled Trial of Two Approaches. *American Journal of Obstetrics & Gynecology MFM*.
- Sherman, M. H., Kan, V. L., Gibbons, P., Garrell, J., & Reznick, M. A. (2025). Analysis of Emergency Department-based Intensive Care Units on Coding and Revenue Generation. *West J Emergency Medicine*, 26(5).
- Smulowitz, P. B., Ostrovsky, D., Burke, R. C., Novack, V., Isbell, L., Kan, V., Zaborski, L., & Landon, B. E. (2025). Clinician Risk Tolerance and Rates of Admission from the Emergency Department for Medicare Patients. *Annals of Emergency Medicine*. <https://doi.org/10.1016/j.annemergmed.2025.06.611>
- Stephens, K. A., Eeghen, C. van, Zheng, Z., Anastas, T., Ma, K. (Pui K.), Prado, M. G., Clifton, J., Rose, G., Mullin, D., Chan, K. C. G., & Kessler, R. (2025). Intervention Stage Completion and Behavioral Health Outcomes: An Integrated Behavioral Health and Primary Care Randomized Pragmatic Trial. *The Annals of Family Medicine*, 23(1), 35–43. <https://doi.org/10.1370/afm.230576>
- Su, S., & Yang, X. (2025). Exploring culturally adaptive definitions and measurement of positive youth development among second-generation Chinese American youth: A qualitative study. *Youth & Society*. <https://doi.org/10.1177/0044118X251344963>
- Swanson, D., Nguyen, D., Lee, J. A., Gerber, B. S., & Lee, J. L. (2025). Exploring Respect, Healthcare Utilization, and Affordability Among Transgender and Gender-Diverse Individuals: An All of Us Analysis. *Journal of General Internal Medicine*.
- Syropoulos, S., Mah, A., Dixon-Gordon, K. L., Markowitz, E., Nteta, T. M., Reid, A., Ginn, J., Suh, S. M., Ames, D. R., & Lickel, B. (accepted August 2025). Changes in dangerous and competitive worldviews during the Coronavirus epidemic: Evidence from a large-scale U.S. panel study. *Journal of Social and Political Psychology*.
- Vechiu, C., Zimmermann, M., Aubuchon-Endsley, N., Beker, K., Hmaidan, R., & O'Donohue, W. T. (accepted 2025). Female sexual dysfunction in primary care settings: A systematic review and meta-analysis of prevalence. *Journal of Women's Health*.
- Wakai, A., Sinert, R., Zehtabchi, S., Souza, I. S., Benabbas, R., Allen, R., Dunne, E., Richards, R., & Ardilouze, A. (2025). Risk-stratification tools for emergency department patients with syncope: A systematic review and meta-analysis of direct evidence for SAEM GRACE. *Academic Emergency Medicine*, 32(1), 72–86. <https://doi.org/10.1111/acem.15041>

APPENDIX I: CAPES PUBLICATIONS 2025

- Wang, C. X., Hussain, M. A., Tibiriçá, L., Castellanos-Ponce, V., Cherner, M., Palmer, B. W., Kamalyan, L., Yassai-Gonzalez, D., Umlauf, A., Barnes, L. L., Heaton, R. K., Ellis, R. J., & Marquine, M. J. (2025). Social engagement and neurocognition in Latino and non-Latino white older persons with HIV. *AIDS and Behavior*, 29, 1096–1108. <https://doi.org/10.1007/s10461-024-04586-7>
- Weinstock, L. M., Jones, R. N., Miller, T. R., Brown, G. K., Arias, S. A., Graves, H. R., Miller, I. W., Cerbo, L., Rexroth, J., Fitting, H., Russell, D., Kubiak, S., Stein, M. D., Matkovic, C., Yen, S., & Gaudiano, B. A. (2025). Safety planning vs. standard care for suicide prevention after pretrial jail detention: A randomized clinical trial. *JAMA Network Open*, 8(11), e2543156. <https://doi.org/10.1001/jamanetworkopen.2025.43156>
- Wilkie, G., Essa, A., Person, S. D., & Kovell, L. (2025). Echocardiography Parameters and Cardiac Geometry in Pregnancy by Race and Ethnicity. *Obstetric Medicine*. <https://doi.org/10.1177/1753495X241312774>
- Xi, Y., Mielenz, T. J., Andrews, H. F., Hill, L. L., Strogatz, D., DiGuseppi, C., Betz, M. E., Jones, V., Eby, D. W., Molnar, L. J., Lang, B. H., & Li, G. (2025). Prevalence of Depression in Older Adults and the Potential Protective Role of Volunteering: Findings From the LongROAD Study. *Journal of the American Geriatrics Society*, 73(4), 1041–1048.
- Yang, X., Graham Holmes, L., Su, S., & Crehan, E. T. (2025). Looking through a cultural perspective: Autistic young adults' experiences and expectations of sexuality and relationship education in the U.S. *Journal of Autism and Developmental Disorders*. <https://doi.org/10.1007/s10803-025-06831-x>
- Zimmermann, M., Mahanna, A., Shashkova, E., Drouhard, R., Carr, C., Sheldrick, R. C., Boudreaux, E. D., Schmidt, N. B., & Byatt, N. (2025). Anxiety sensitivity in the perinatal period: A scoping review. *Mental Health & Prevention*, 37, 200397.
- Zimmermann, M., Schaefer, A., Tong, X., Palmer, S., Millen, L., Arowosegbe, A., Julce, C., Moore Simas, T. A., Sheldrick, R. C., Mackie, T. I., & Byatt, N. (in press). Perinatal Care Professional Perspectives of Screening for Perinatal Mood and Anxiety Disorders: A Qualitative Analysis. *Journal of Reproductive & Infant Psychology*.
- Zimmermann, M., Yonkers, K. A., Tulu, B., Ford, L., Peacock-Chambers, E., Clare, C. A., Boudreaux, E. D., Lemon, S. C., & Byatt, N. (2025). Adapting an anxiety sensitivity intervention for perinatal mental health: Development of a digital intervention. *Journal of Nervous and Mental Disease*, 213(7), 167–179. <https://doi.org/10.1097/NMD.0000000000001841>
- Zhou, P., Li, Z., Liu, F., Kwon, E., Hsieh, T.-C., Ye, S., Vasudevan, S., Lee, J. A., Tran, K.-V., & Zhou, C. (2025). BAMBI integrates biostatistical and artificial intelligence methods to improve RNA biomarker discovery. *Briefings in Bioinformatics*, 26(2).